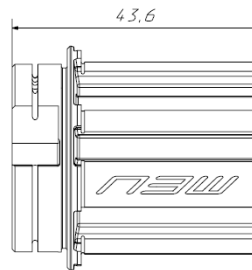


Dear Customer,

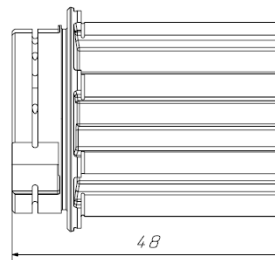
We are writing to you about the installation of the 11-12s sprockets on the new Campagnolo N3W body featured on the Shamal Carbon wheels.

These wheels feature a new Campagnolo N3W body.

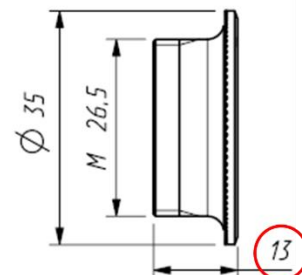
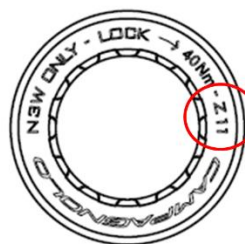
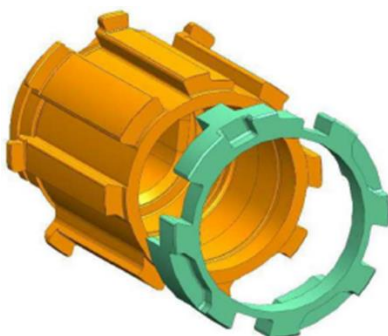
N3W body



Traditional Campagnolo body



There is also an N3W spacer and a dedicated locking ring for the 11-12s sprocket boxes, which must have the Z11 sprocket as their first sprocket.



Subject:

**Installation of 11-12V sprockets on N3W FW body**

Date

20-07-2020

Page

2 of 3

If you are unable to position the sprockets on the FW body due to the sprocket interfering with the adapter, the following procedure must be followed.



Remove the N3W adapter from the FW body and fit all sprockets except the two smallest sprockets.



Subject: **Installation of 11-12V sprockets on N3W FW body**

Place the N3W adapter on the FW body.



Fit the last two sprockets.



Best regards,

Customer Care and Product Behaviour