

Campagnolo

SIHAMAL™
CARBON



SHAMAL CARBON DB

The Shamal wheelset, since its first appearance in 1992, always represented a push beyond the standards, a challenge and a win for Campagnolo.

We engineered for this icon a new makeup to take it to the next step of **endurance** cycling: carbon rim and wider internal channel.



Technical characteristics

Rim	28'' - 700C
	UD (unidirectional) carbon
	C21 -2WF
	FRONT 35mm REAR 40mm
Spokes	24 F/R - Stainless steel
	J-type - crossed side (left front/right rear)
	Stright – radial side (front right/rear left)
	Sections 2-1,6-2
Nipples	Aluminium black self locking
Hubs	Aluminium - AFS
	Cup and cones (steel balls)
	Front HH12-100
	Rear HH12-142
	Fw bodies (d.33 mm): Campy N3W – HG – XDR
Weight	1585g




Designated use (from the User Manual)

DESIGNATED USE - This Campagnolo product is designed and manufactured exclusively for use on **racing bicycles** used on **tarmacked roads or for trekking, cyclocross, gravel.**

Any other “off-road” use of this product is **prohibited** (e.g. tandem, cross-country, all mountain/enduro or any other off-road **discipline involving jumps or very uneven surfaces with protruding or jagged rocks**) and could result in accident, physical injury, or death.

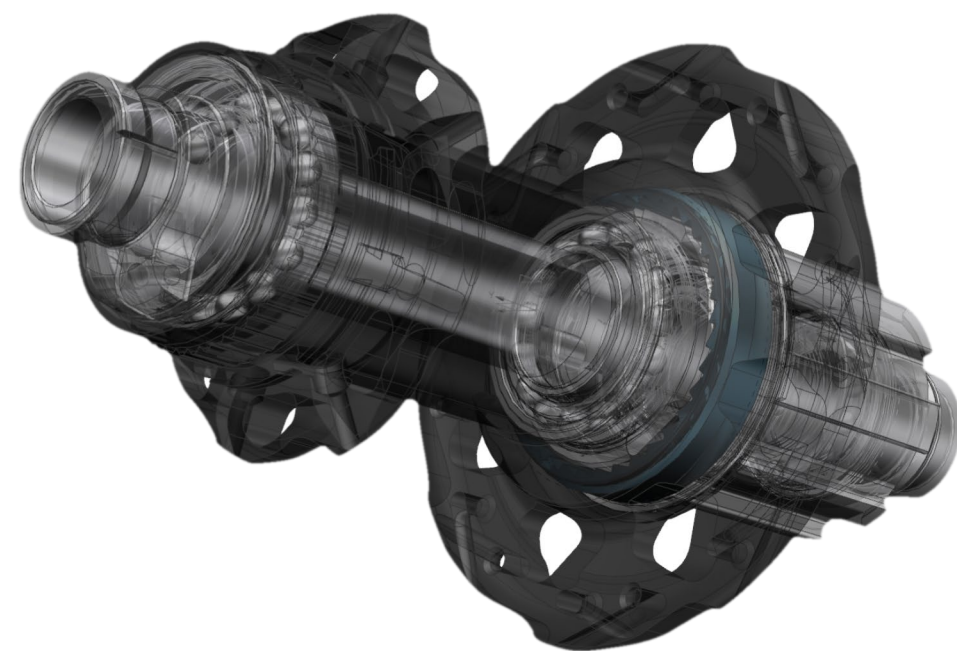
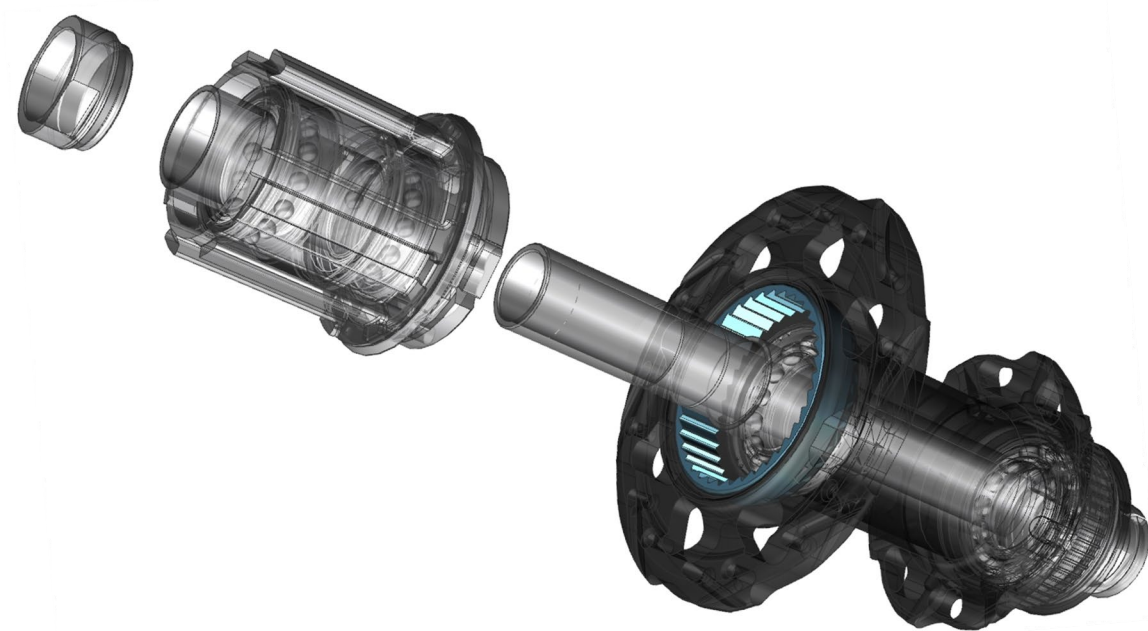
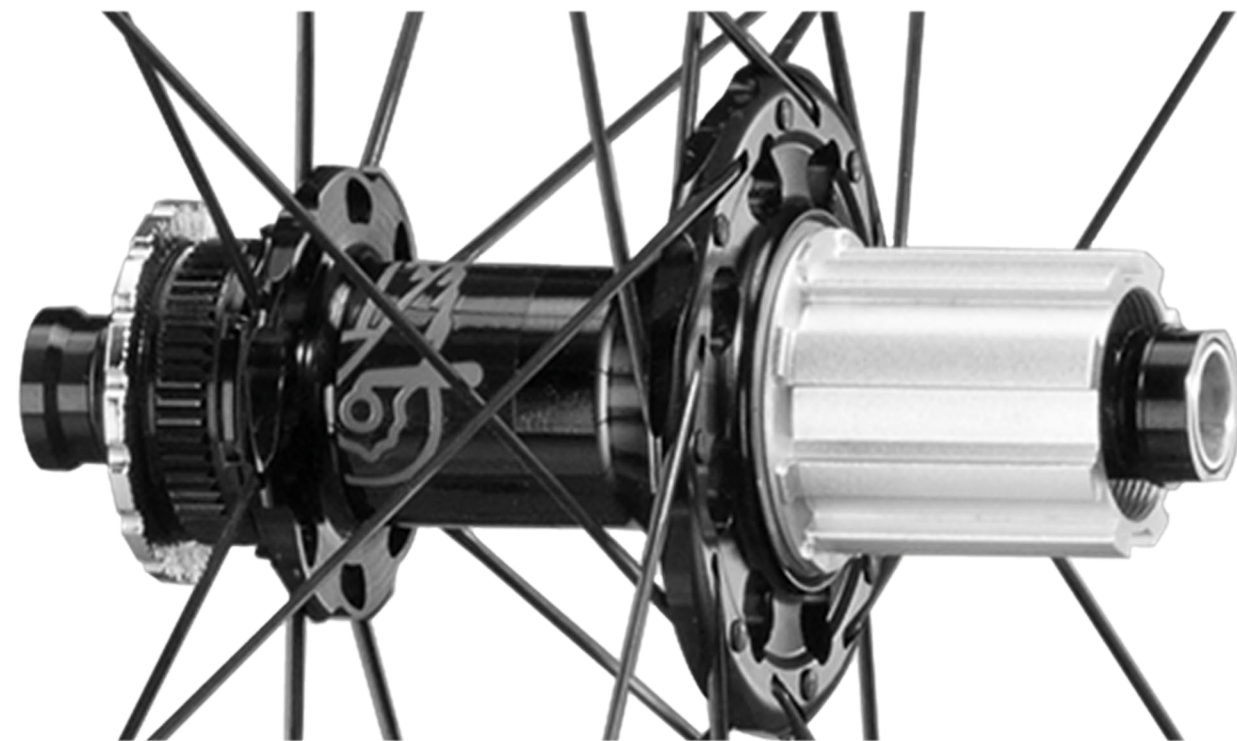
Tires



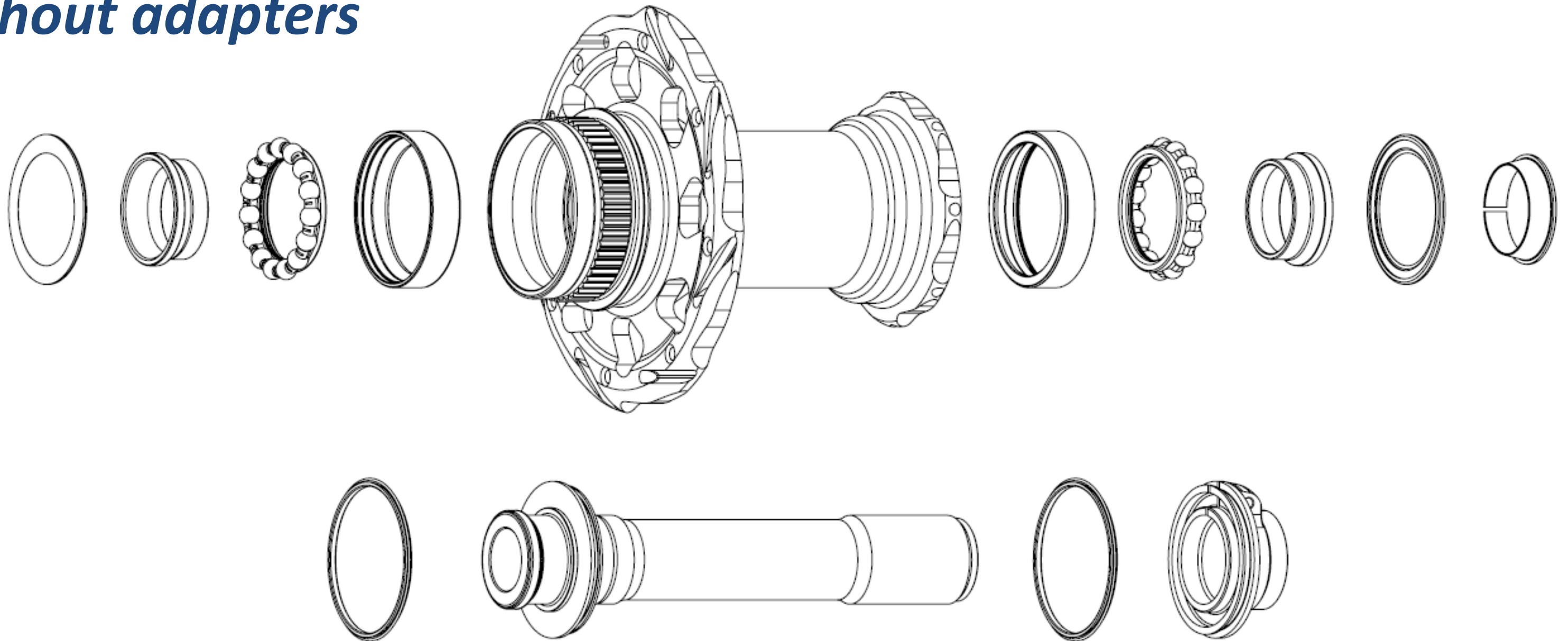
USO DESIGNATO / DESIGNATED USE BESTIMMUNGSGEMÄSSER GEBRAUCH / UTILISATION PRÉVUE USO PREVISTO / 想定された使用	A = LARGHEZZA SEZIONE PNEUMATICO (mm) / A = TIRE SECTION WIDTH (mm) / A = BREITE REIFENQUERSCHNITT A = LARGEUR DE LA SECTION DU PNEU (mm) / A = ANCHURA SECCIÓN DEL NEUMÁTICO (mm) / A = タイヤ・セクション幅 (mm)								
		23	25	28	32	35	38	40	44
ROAD - TREKKING - CYCLOCROSS		●	●	●	●	●	●	●	●
GRAVEL	NOT ALLOWED						●	●	●



Hubs

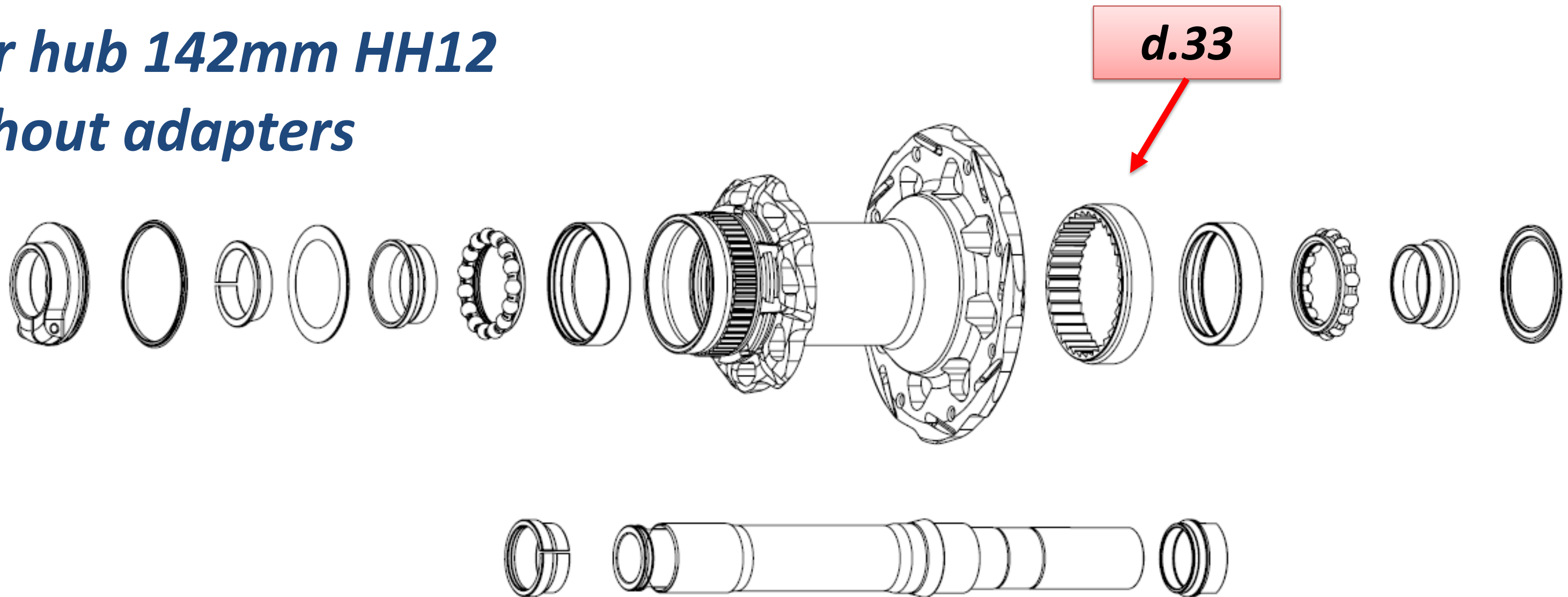


Front hub 100mm HH12 Without adapters



It's possible to transform the front hub to be compatible with QR standard using "transformation kit front Bora DB from HH12/100 to QR", code: WH19-KITHHQRF

Rear hub 142mm HH12 Without adapters



NEW:

- Axle for new fw body N3W (d.33)
- Right nut N3W (d.33)
- **The hub can't be transformed**

Campagnolo Fulcrum

FH-N3WA33 R0-203 N3W alu FW body - d.33 mm pawls

FW bodies d.33

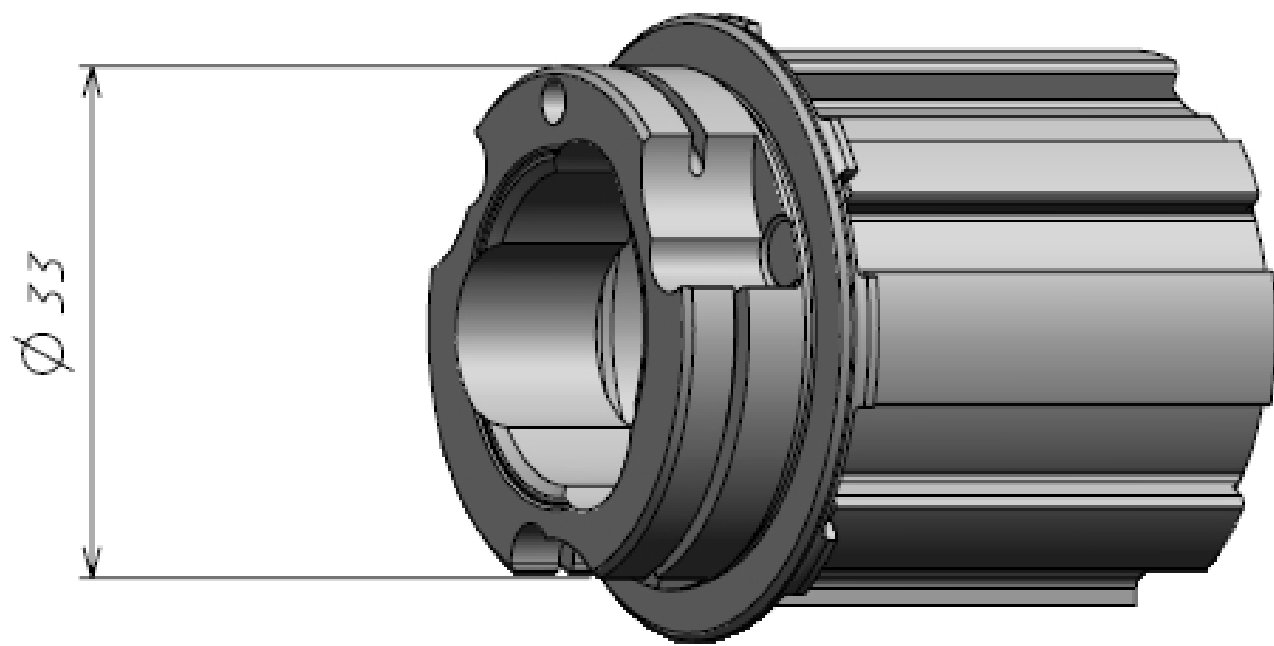
In this wheel we're introducing new FW bodies **d.33**.

These fw bodies can be distinguished by:

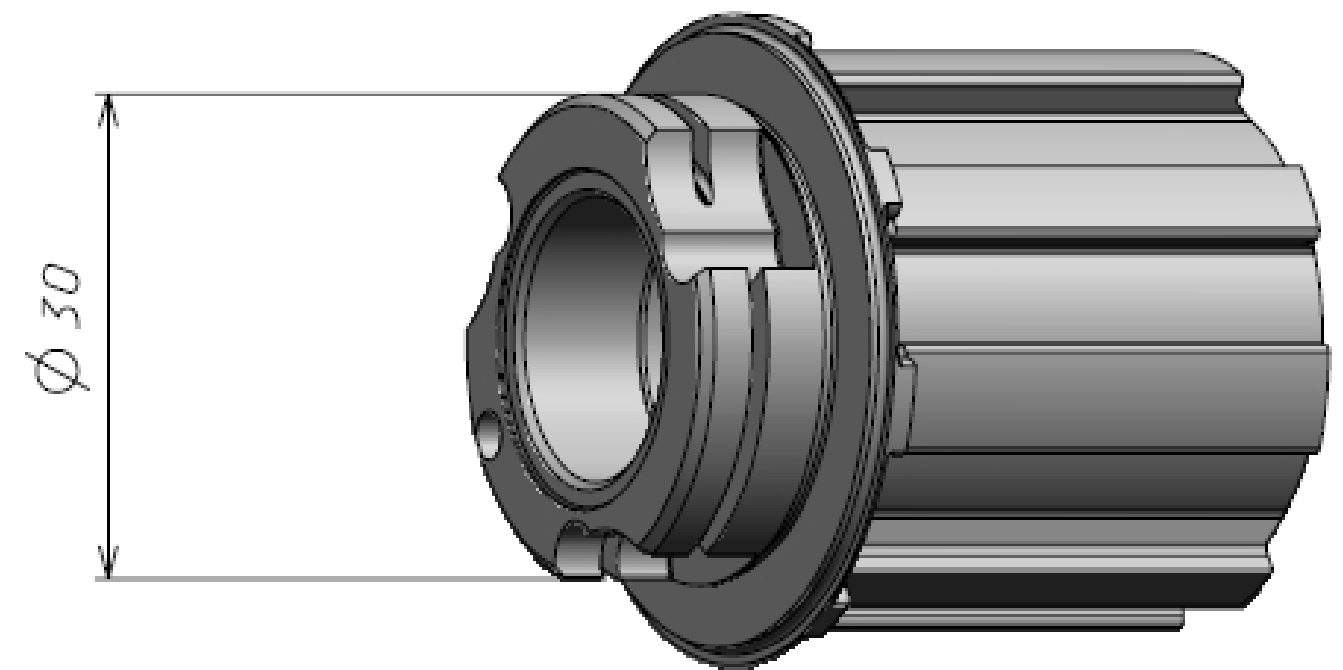
- Diameter of 33 mm in the ratchet area
- A groove in the body in the stop area of the sprocket cassette

FW bodies d.33

- Diameter in the ratchet area



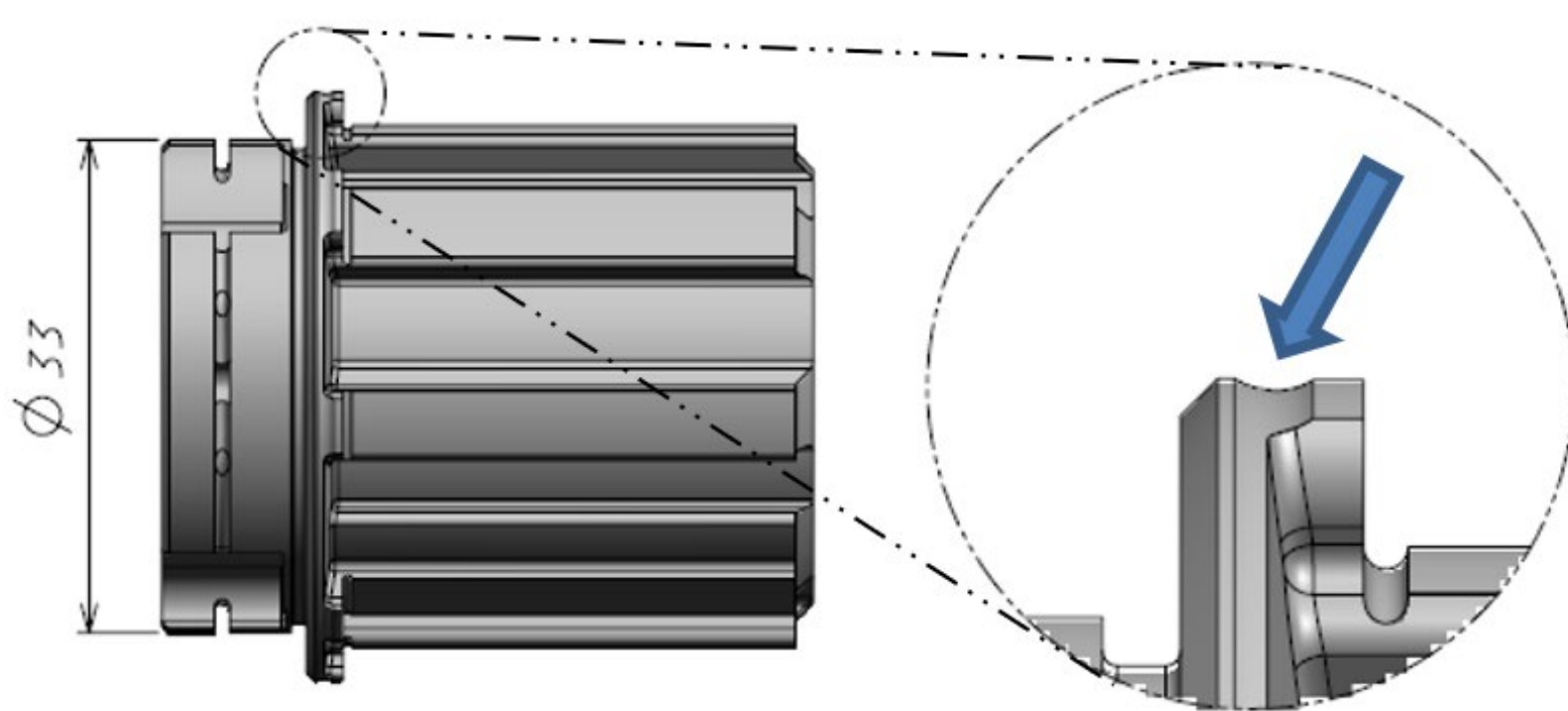
Example of FW body ROAD:
33 mm



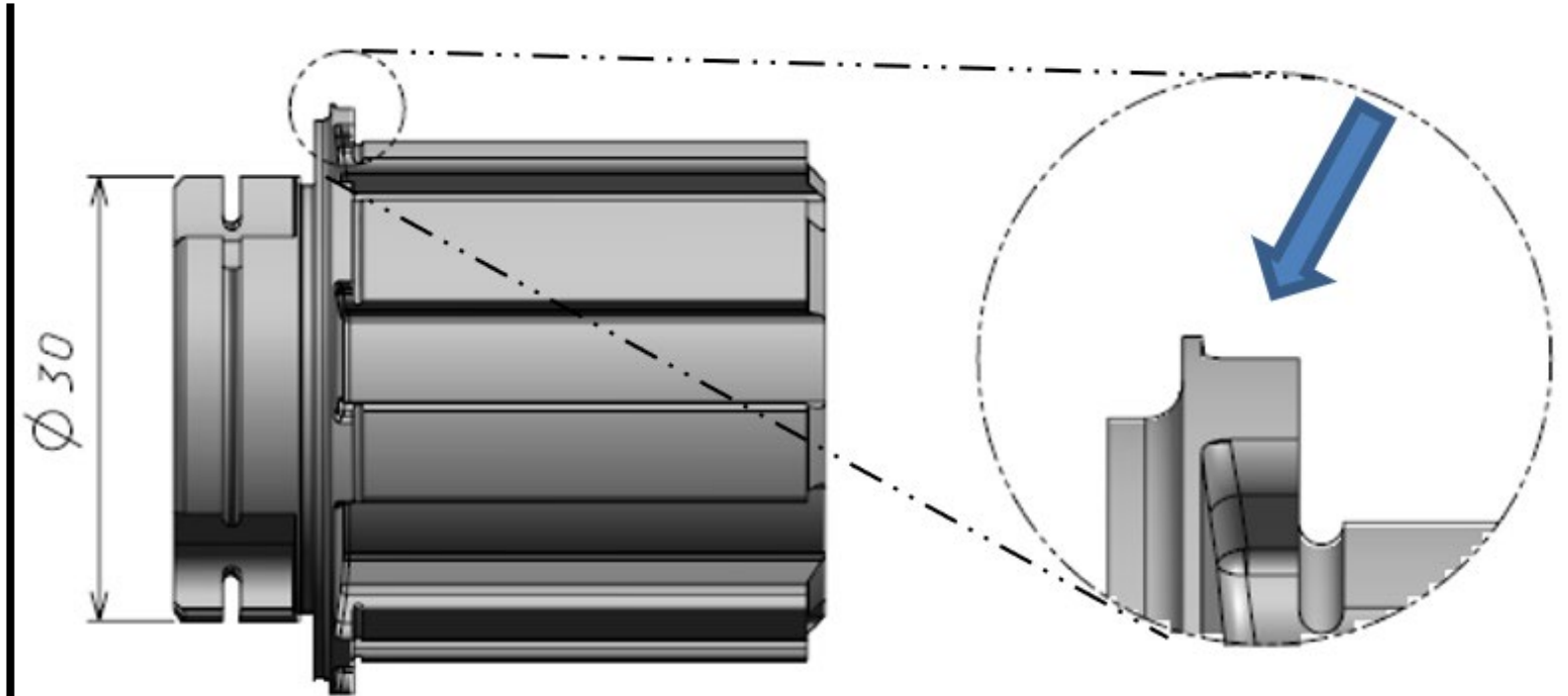
Example of FW body
ROAD: **30 mm**

FW bodies d.33

- A groove in the body in the stop area of the sprocket cassette



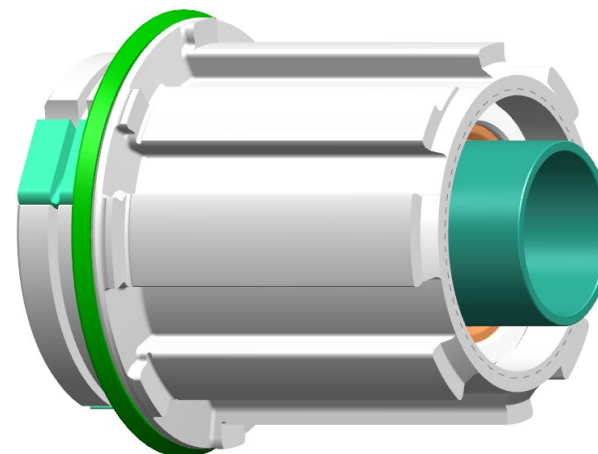
Example of FW body ROAD ROAD: **33 mm with groove**



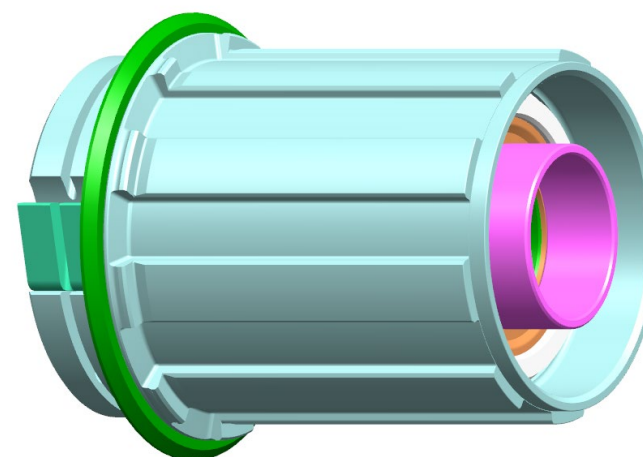
Example of FW body ROAD ROAD: **30 mm without groove**

d.33 mm Free wheel bodies

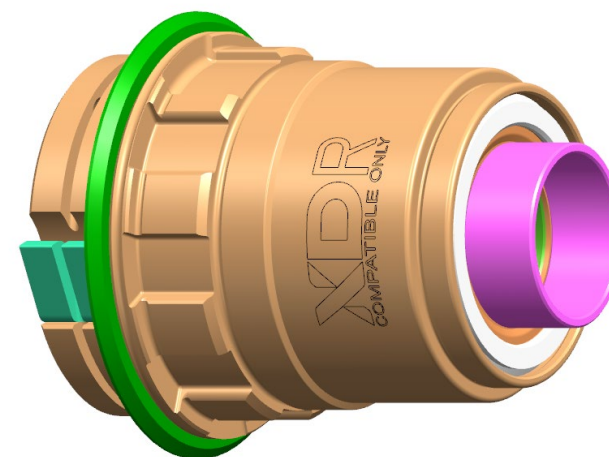
FH-N3WA33	corpo RL Campy N3W alluminio cricchetti d.33 mm	N3W alu FW body - d.33 mm pawls
-----------	--	------------------------------------



FH-HGA33	corpo RL tipo HG Road alluminio cricchetti d.33 mm	HG type alu FW body - d.33 mm pawls
----------	---	---



FH-XDRA33	corpo RL XDR alluminio cricchetti d.33 mm	XDR alu FW body - d.33 mm pawls
-----------	--	------------------------------------



N3W free wheel body

In the Campagnolo version, you find the new N3W fw body + N3W adapter + ring nut



Campagnolo
9-10-11-12s



N3W
New standard



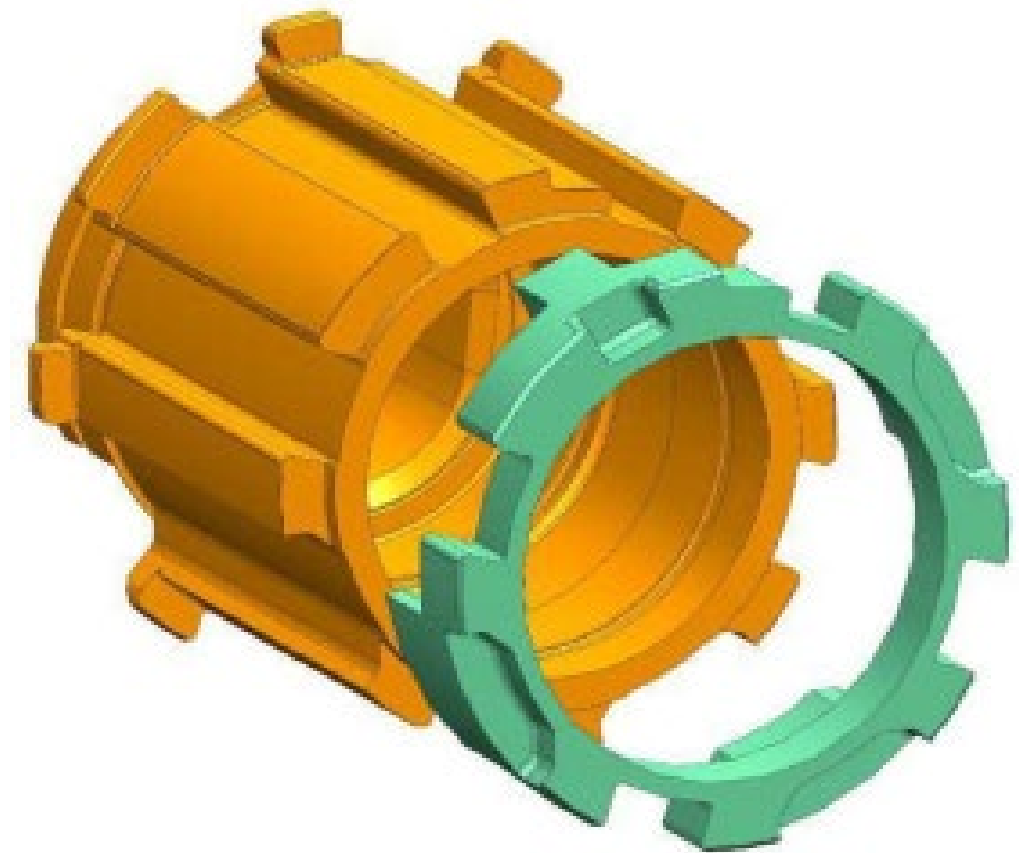
N3W + adapter
10-11-12s
(Z11 first sprocket only)

N3W free wheel body

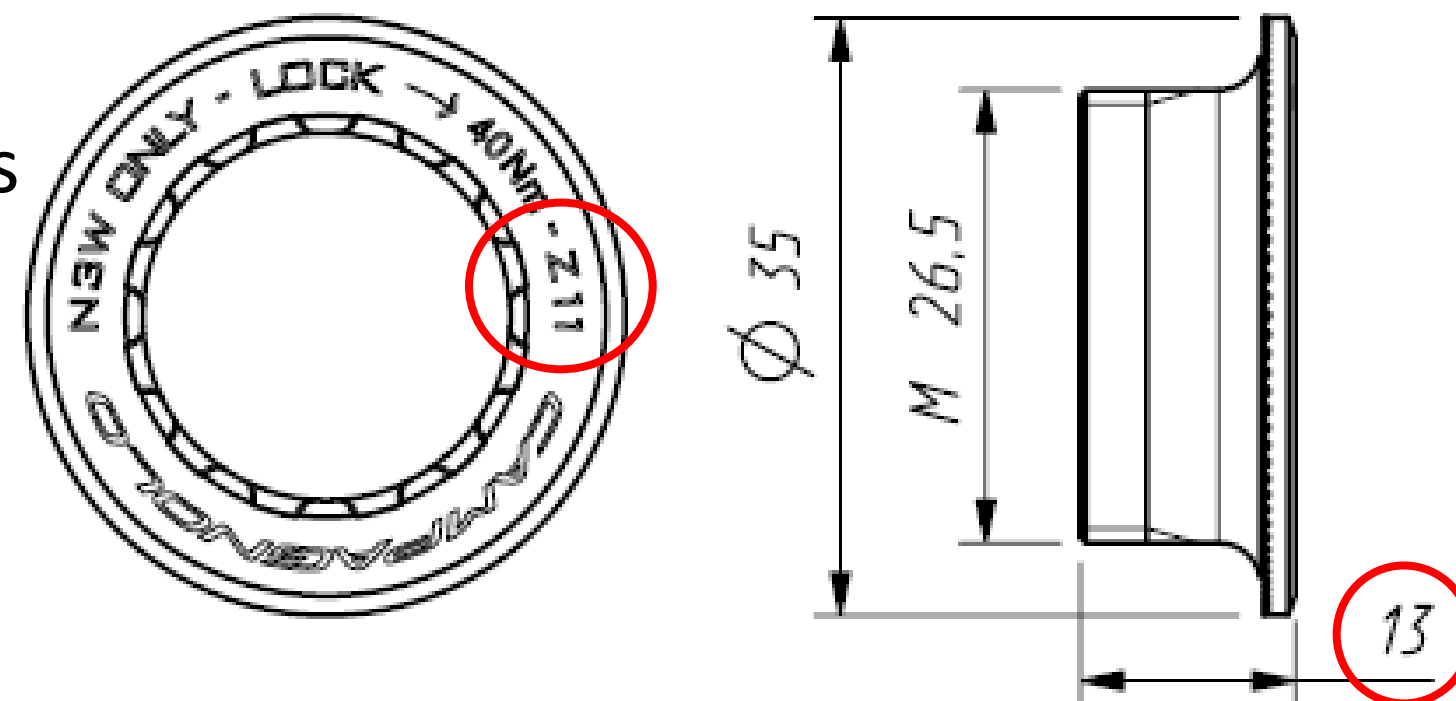
The N3W body can be made compatible with the 11-12S cassettes through:

- **adaptor ring**
- **dedicated ring nut**

Important: only 10-11-12-speed sprocket cassettes with a Z11 (11 teeth) first sprocket can be used. Cassettes with Z12 first sprocket cannot be used.



Dedicated ring nut: As opposed to the current ring nuts for Campagnolo bodies with length of 9 mm, this ring nut has a length of **13 mm**.

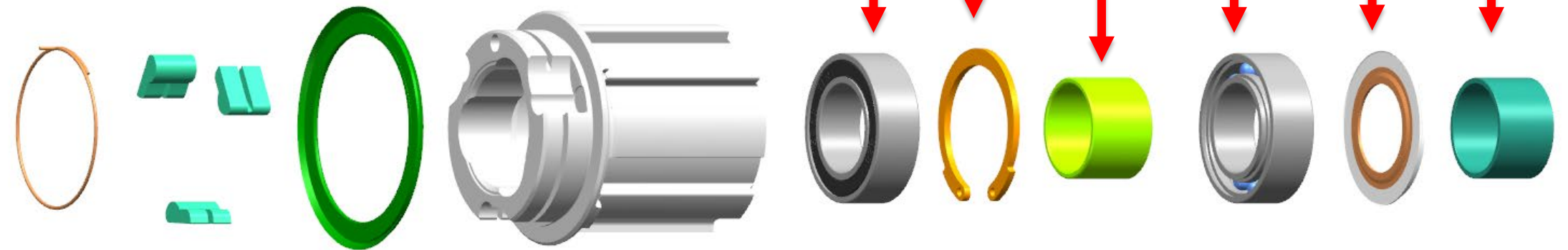


Corpetti ruota libera d.33

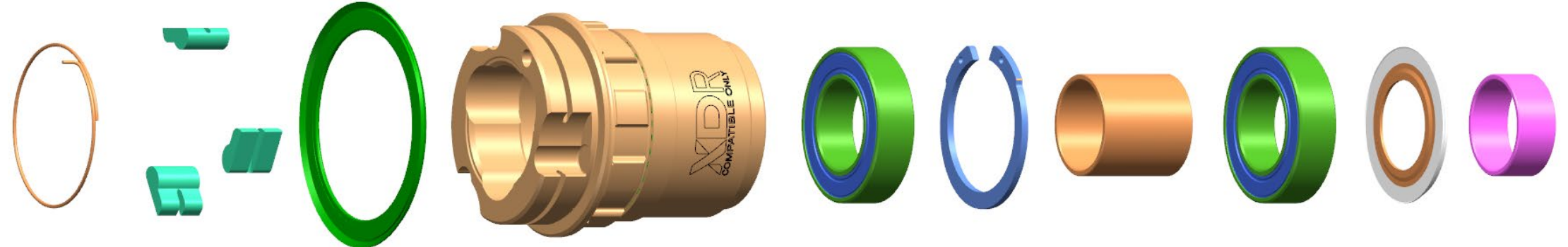
Compatibilità corpetti

Attenzione: componenti diversi tra i vari corpetti

FH-N3WA33
corpo RL Campy N3W alluminio cricchetti d.33 mm
N3W alu FW body - d.33 mm pawls



FH-HGA33
corpo RL tipo HG Road alluminio cricchetti d.33 mm
HG type alu FW body - d.33 mm pawls



FH-XDRA33
corpo RL XDR alluminio cricchetti d.33 mm
XDR alu FW body - d.33 mm pawls

