



FINISH LINE

HALO™

FASTER FOR LONGER™

UNPARALLELED LUBRICATION

“Since 1988, Finish Line® has dedicated itself to advancing the science of bicycle lubrication. Our HALO™ range represents our greatest achievement involving the tribology of reducing drivetrain friction and mechanical wear.

3 years in the making, HALO™ WAX, HALO™ HOT WAX, and HALO™ WET lubricants utilize state-of-the-art chemistries to deliver unparalleled performance attributes.”

Henry (Hank) Krause - President / CEO - Finish Line®





Finish Line® HALO™ is a range of 3 unparalleled chain lubricants delivering extreme performance advantages for all cycling disciplines and in all conditions. Simply put, **no other chain lubricants are as fast, for as long.**



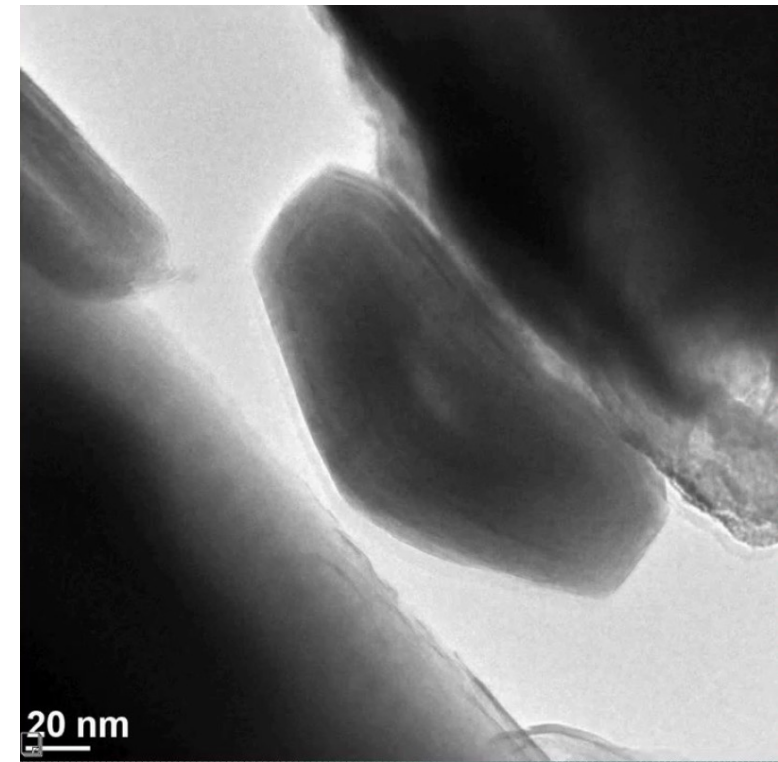
HALO™ PERFORMANCE

- The **HALO™** range includes an advanced **WAX** lubricant for superior cleanliness, a **WET** option for maximum durability and water-resistance, and a **HOT WAX** for the ultimate chain lubrication in all conditions.
- Not classified as hazardous according to U.S. CPSC, U.S. OSHA, or EU CLP regulations. Contains no ingredients expected to persist or bio-accumulate in the environment. Formulated without fluorinated or PFAS chemicals. Inherently biodegradable (>20%, <60% in 28 days). Non-flammable, not restricted for air transportation.



SPHERICAL TUNGSTEN

- **Finish Line® HALO™** products are powered by elite-grade ingredients including patented Spherical Tungsten.
- Spherical Tungsten features a proprietary hollow core to reduce vibrational friction caused by high-torque pedaling.
- Spherical in shape, these micron-sized particles further reduce friction by creating a rolling effect on the surface of the chain.



HALO™: SMART LUBER™

- The **Finish Line® Smart Luber™** delivers fast and efficient chain lubrication.
- An open and close dial starts and stops the flow of lubricant.
- Three specially designed wicking pads apply the lubricant to multiple sides of the chain at once, ensuring no lubricant is spilled or wasted.
- Pads can be removed and cleaned or replaced when worn. Each overcap includes 6 spare pads.
- Overcap prevents pads absorbing dirt when not in use and provides convenient transportation.
- If conventional chain lubrication application is preferred, the **Smart Luber™** can be unscrewed and removed from the bottle, exposing Finish Line's precision application tip.



HALO™ WAX

Engineered for unparalleled drivetrain performance, durability, and water-resistance. **HALO™ WAX** is powered by three elite-grade ingredients: Highly-Refined Paraffin, Spherical Tungsten and Ceramic Particles.

HIGHLY-REFINED PARAFFIN - creates a robust dry-to-the-touch coating that does not attract and absorb contaminants that would otherwise cause friction and wear.

SPHERICAL TUNGSTEN - features a proprietary hollow core to reduce vibrational friction caused by high-torque pedaling. Spherical in shape, these micron-sized particles further reduce friction by creating a rolling effect on the surface of the chain.

CERAMIC PARTICLES - micron-sized boron nitride platelets cover the chain to form a protective, non-stick coating. This coating substantially reduces wear and helps extend the life of expensive drivetrain components.



HALO™ WET

Engineered for unparalleled drivetrain performance, durability, and water-resistance. **HALO™ WET** is powered by three elite-grade ingredients: Gas-To-Liquid, Spherical Tungsten and Ceramic Particles.

GAS-TO-LIQUID - is a hydrodynamic fluid film synthesized from natural gas. Its unique molecular structure minimizes drivetrain noise, dramatically reduces friction, repels water, and maintains viscosity in extreme temperatures.

SPHERICAL TUNGSTEN - features a proprietary hollow core to reduce vibrational friction caused by high-torque pedaling. Spherical in shape, these micron-sized particles further reduce friction by creating a rolling effect on the surface of the chain.

CERAMIC PARTICLES - micron-sized boron nitride platelets cover the chain to form a protective, non-stick coating. This coating substantially reduces wear and helps extend the life of expensive drivetrain components.



HALO™ HOT WAX

HALO™ HOT WAX chain lubricant is engineered to dramatically improve drivetrain performance by:

1. Significantly reducing the attraction of abrasive contaminants.
2. Delivering an unrivaled level of reduced drivetrain friction.
3. Ensuring extreme mileage between re-lubrication intervals.

HALO™ HOT WAX is powered by three elite-grade ingredients: Highly-Refined Paraffin, Spherical Tungsten and Ceramic Particles.

Packaging bags are specifically designed to be boiled in water. They are reusable and contain enough wax pellets for approximately 25 chain immersions.

Formulated without fluorinated or PFAS chemicals. Non-flammable, not restricted for air transportation.



HALO™: CHAIN IMMERSION TOOL

INSTRUCTIONS

1. Locate your master link to quickly and easily remove chain (master link pliers required). Completely clean and dry chain before first application.
2. To melt wax pellets, place the HALO™ bag in a pot of water and bring the water to a gentle boil. Alternatively, pour pellets into a slow cooker to melt the wax.
3. Secure chain on the Immersion Tool provided.
4. Once the wax pellets are fully melted, remove bag and set on covered work surface.
5. Use Immersion Tool to submerge chain into melted wax.
6. Leave chain in the wax for at least 3 minutes to ensure full penetration into chain bushings.
7. Remove chain from hot wax and hang until fully dry (approximately 30 minutes). Note: Some wax will drip from the chain.
8. Once dry, manipulate chain links before reattaching chain to your bike. Note: It is normal for excess wax to flake off.

