



# PLATFORM 13

## QUICK START GUIDE\*

### \* ACTIVATION OF THE SYSTEM (charging and installation of the batteries) for the CYCLIST (WHEN GROUPSET IS PAIRED AND ASSEMBLED)

IT Questo documento si affianca e non sostituisce gli User Manual dei componenti che devono essere letti e compresi prima di utilizzare questo prodotto; la cui mancata osservanza potrebbe causare incidenti, lesioni fisiche o morte.

EN This document supplements and does not replace the User Manuals of the components, which must be read and understood before using this product. Failure to observe them could result in accidents, personal injury or death.

ES Este documento acompaña y no reemplaza el Manual del usuario del componente que debe leerse y entenderse antes de usar este producto; el incumplimiento de estas instrucciones podría provocar accidentes, lesiones físicas o la muerte.

DE Dieses Dokument ersetzt nicht die Bedienungsanleitung der Komponente, die vor der Verwendung dieses Produktes gelesen und verstanden werden muss deren Nichtbeachtung zu Unfällen, zu Körperverletzungen oder zum Tod führen und könnte, sondern ergänzt diese.

FR Ce document accompagne et ne remplace pas le manuel d'utilisation du composant, qui doit être lu et compris avant d'utiliser ce produit. Le non-respect de ce manuel peut entraîner un accident, des blessures voire la mort.

JP この説明書は構成部品のユーザー・マニュアルを補完するもので、その代わりになるものではありません。この製品を使用する前には、必ずユーザー・マニュアルをよく読み、内容を理解してください。それを怠ると、事故や身体損傷、死亡の原因になる場合があります。

## LEGENDA

IT	EN	ES	DE	FR	JP
	Premere	Presión	Druck	Appui	押す
	Pressione veloce	Presión rápida	Schneller Druck	Appui rapide	短く押す
	Lampeggio veloce	Parpadeo rápido	Schnelles Blinken	Clignotement rapide	速い点滅
	Lampeggio lento	Parpadeo lento	Langsames Blinken	Clignotement lent	遅い点滅
<b>X S</b>	Tempo limite	Tiempo límite	Zeitlimit	Limite de temps	消えるまでの時間
	Fisso	Fijo	Fest	Fixe	固定
	Spento	Apagado	Aus	Éteint	消灯

## GROUPSET ALREADY PAIRED, BATTERIES TO BE INSTALLED

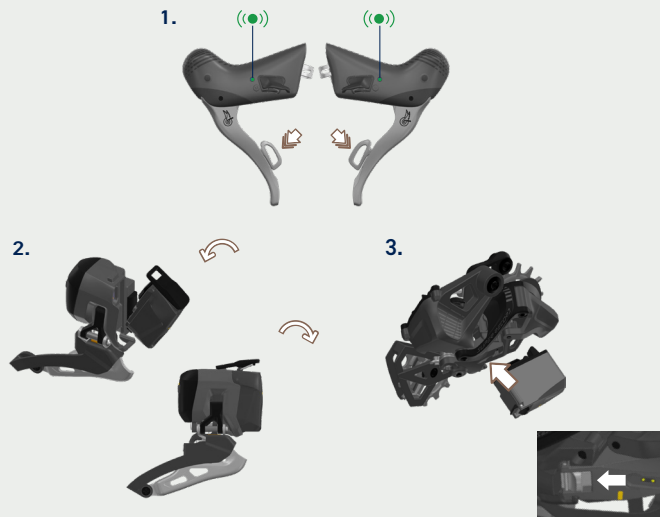
If the batteries are already installed and charged, please go to Step 3.

### STEP 1 CHARGE YOUR BATTERIES

Use standard USB (5 Volt - 2 Ampere) ● In charge ● Full charge



### STEP 2 WAKE UP THE SHIFTERS INSERT AND LOCK THE BATTERIES (FRONT AND REAR DERAILLEUR)



### STEP 3 WAKE THE SYSTEM UP

Just shake your bike, and press few time shifting levers. It can take up to 30s before front and rear derailleur move.



### STEP 4 THE LEDs TURN OFF AND THE SYSTEM IS OPERATIONAL



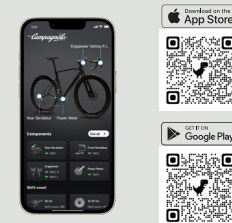
»»» READY TO RIDE «««

## GROUPSET PAIRED AND ASSEMBLED, BATTERIES ALREADY INSTALLED

Just shake your bike, press few time one shifting lever and check the LEDs (can take up to 30s)



Customization and firmware update via MyCampy App



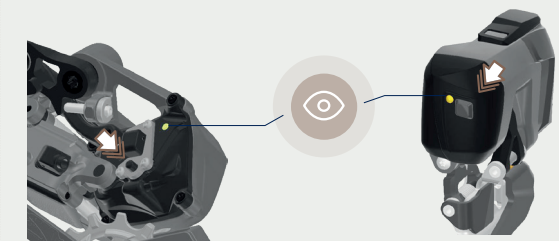
### THE LEDs TURN OFF AND THE SYSTEM IS OPERATIONAL



»»» READY TO RIDE «««

## BATTERY LEVEL

Press the mode button



Battery level

- 100% - 50%
- 50% - 10%
- 10% - 0%



# PLATFORM 13

## QUICK START GUIDE\*

\* GROUPSET SETUP PROCEDURE  
For qualified mechanics only

GROUPSET TO BE PAIRED,  
BATTERIES TO BE INSTALLED

### STEP 1

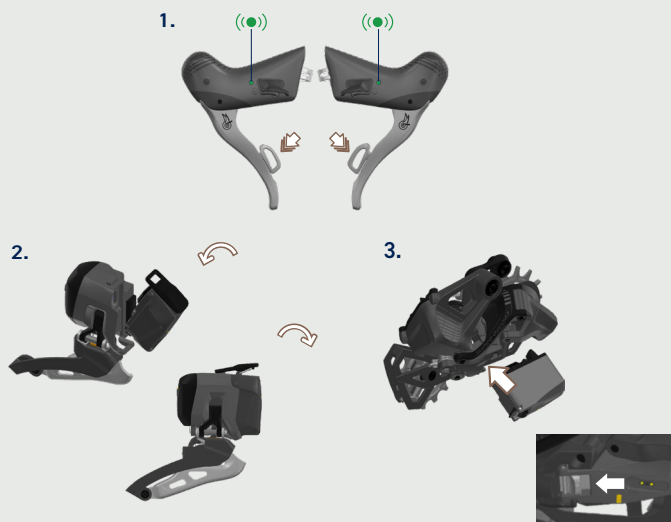
#### CHARGE YOUR BATTERIES

Use standard USB (5 Volt - 2 Ampere) ● In charge ● Full charge



### STEP 2

#### WAKE UP THE SHIFTERS INSERT AND LOCK THE BATTERIES (FRONT AND REAR DERAILLEUR)



### STEP 3

#### PAIR THE SYSTEM

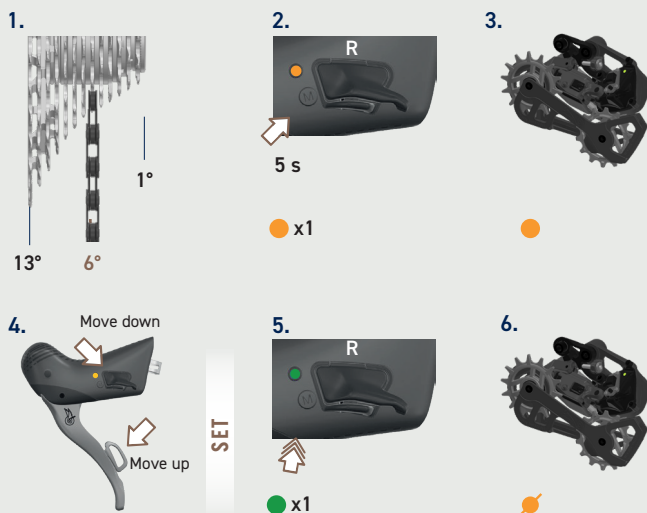
Just shake your bike, press few time shifting levers.  
It can take up to 30s before front and rear derailleur move.



If any components doesn't pair please refer to the procedure:  
Erasing the Bluetooth memory of the components

#### GROUPSET PAIRED

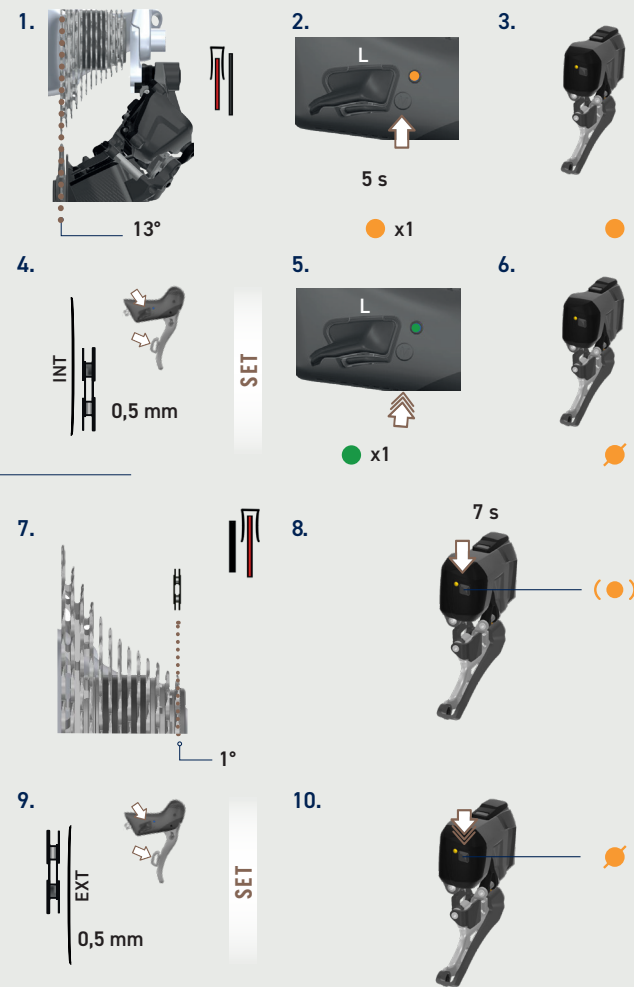
#### REAR DERAILLEUR SETTING



#### REAR DERAILLEUR SET

⚠ Remember to adjust the inner travel limit screw!

#### FRONT DERAILLEUR SETTING



#### READY TO RIDE

Campagnolo S.r.l. reserves to modify the content of this manual without notice.  
The updated version will always be available at [www.campagnolo.com](http://www.campagnolo.com)

#### DISCOVER MORE

Join us to be part of our community

- facebook.com/CampagnoloOfficial
- twitter.com/campagnolosrl
- instagram.com/campagnolosrl
- youtube.com/user/CampagnoloSrl

