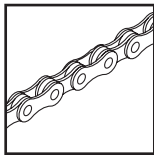


*Campagnolo*



**RECORD ULTRA NARROW™  
CHORUS ULTRA NARROW™  
VELOCE ULTRA NARROW™  
5,9 mm CHAINS**



*Campagnolo*

*Campagnolo*



## WARNING!

Carefully read, follow and understand the instructions given in this manual. It is an essential part of the product, and you should keep it in a safe place for future reference.

**MECHANIC QUALIFICATION** - Please be advised that many bicycle service and repair tasks require specialized knowledge, tools and experience. General mechanical aptitude may not be sufficient to properly service or repair your bicycle. If you have any doubt whatsoever regarding your service/repair ability, please take your bicycle to a qualified repair shop.

**INTENDED USE** - This Campagnolo® product is designed and manufactured for use only on road racing style bicycles that are ridden **only** on smooth road or track surfaces. Any other use of this product, such as off-road or on trails **is forbidden**.

**LIFESPAN - WEAR - INSPECTION REQUIREMENT** - The lifespan of Campagnolo® components depends on many factors, such as rider size and riding conditions. Impacts, falls, improper use or harsh use in general may compromise the structural integrity of the components and significantly reduce their lifespan. Some components are also subject to wear over time. Please have your bicycle regularly inspected by a qualified mechanic for any cracks, deformation, signs of fatigue or wear (use of penetrating fluid or other visual enhancers to locate cracks on parts is recommended). If the inspection reveals any deformation, cracks, impact marks or stress marks, no matter how slight, **immediately** replace the component; components that have experienced excessive wear also need **immediate** replacement. The frequency of inspection depends on many factors; check with your authorized Campagnolo® representative to select a schedule that is best for you. If you weigh 82 kg/180 lbs or more, you must be especially vigilant and have your bicycle inspected more frequently (than someone weighting less than 82 kg/180 lbs) for any evidence of cracks, deformation, or other signs of fatigue or stress. Check with your mechanic to discuss whether the components you selected are suitable for your use, and to determine the frequency of inspections.



## WARNING!

**Important PERFORMANCE, SAFETY and WARRANTY Notice** - The parts and components of Campagnolo® 9s and 10s drivetrains, braking systems, rims, pedals and all other Campagnolo® products, are designed as a single integrated system. To avoid compromises in terms of SAFETY, PERFORMANCE, DURABILITY, FUNCTION, and to prevent voiding the WARRANTY, use only the parts and components supplied or specified by Campagnolo S.r.l., without interfacing them with or substituting them with products, parts or components manufactured by other companies.

### Note

Tools supplied by other manufacturers for components similar to Campagnolo® components, may not be compatible with Campagnolo® components. Likewise, tools supplied by Campagnolo s.r.l. may not be compatible with components supplied by other manufacturers. Always check with your mechanic or the tool manufacturer to insure compatibility before using tools supplied by one manufacturer on components supplied by another.

The user of this Campagnolo® product expressly recognizes that there are risks inherent in bicycle riding, including but not limited to the risk that a component of the bicycle can fail, resulting in an accident, personal injury or death. By his purchase and use of this Campagnolo® product, the user expressly, voluntarily and knowingly accepts and/or assumes these risks, including but not limited to the risk of passive or active negligence of Campagnolo s.r.l. or hidden, latent or obvious defects in the product, and agrees to hold Campagnolo s.r.l. harmless to the fullest extent permitted by law against any resulting damages.

If you ever have any questions, please contact your mechanic or your nearest Campagnolo® dealer for additional information.

**FAILURE TO FOLLOW THESE INSTRUCTIONS COULD RESULT IN FAILURE OF THE PRODUCT, AN ACCIDENT, PERSONAL INJURY OR DEATH.**



*Campagnolo*

## GENERAL SAFETY RECOMMENDATIONS

- Be sure that the periodic maintenance schedule is strictly followed.
- Always use original Campagnolo® spare parts.
- Never make any modifications whatsoever to the components.
- Parts which have been bent or otherwise damaged in an accident or as a result of any other impact must not be re-straightened. They must be replaced immediately with original Campagnolo® parts.
- Wear clothes which are snug-fitting and which make you visible to traffic, such as neon, fluorescent, or other bright colors.
- Avoid biking at night, because it is more difficult for you to be seen by traffic, and it is more difficult for you to see obstructions on the ground. If you do ride at night, you should equip your bicycle with and use a headlight and a taillight.
- When riding in wet conditions, remember that the stopping power of your brakes is greatly reduced and that the adherence of the tires on the ground is considerably reduced. Also bear in mind that because of the progressive drying of the braking surface during braking itself, braking power may vary sharply. This makes it harder to control and stop your bicycle. Extra care is required when riding your bicycle in wet conditions to avoid an accident.
- Campagnolo® reminds you to always wear a properly fitted and fastened bicycle helmet that has been approved by ANSI or SNELL.
- If you ever have any comments, questions, or concerns, please contact your nearest Campagnolo® Service Center.

*Campagnolo*

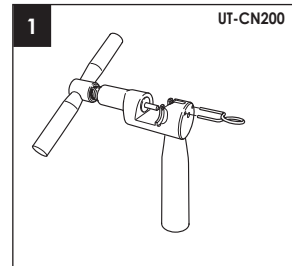


Campagnolo S.r.l. reserves to modify the content of this manual without notice. The updated version will always be available [www.campagnolo.com](http://www.campagnolo.com). On our website you will also find information on the other Campagnolo® products and the spare parts catalogue.

## TOOLS

 **WARNING!**

All connecting and disconnecting of the **RECORD ULTRA NARROW™**, **CHORUS ULTRA NARROW™**, **VELOCE ULTRA NARROW™** chains should be performed using the special Campagnolo® **UT-CN200** tool, not included in this kit (Fig.1). Use of other tools could damage the chain and/or provoke unexpected chain failure resulting in an accident, personal injury or death.



**WARNING!**

Always wear safety glasses or goggles when using Campagnolo® **UT-CN200**.



Campagnolo®

**! WARNING!**

The pusher of the Campagnolo® tool **UT-CN200** is provided with a replaceable tapered tip pin; if the pin is damaged or it becomes worn, please replace it with the suitable Campagnolo® spare pin UT-CN201. Failure to timely replace the tip pin can damage your chain, resulting in an accident, personal injury or death.

**1. CHAIN INSTALLATION**

**! WARNING!**

An incorrectly assembled chain can break, resulting in an accident, personal injury, or death. If you have any doubt whatsoever regarding your ability to properly perform any of the operations in this manual, please take your bicycle to a qualified repair shop.

**! WARNING!**

The use of sprockets or chainrings which are not marked Campagnolo® can damage the chain. This may result in its unexpected opening of the chain and cause accidents, personal injury or death.

- Determine the correct length of the chain by putting it onto the smallest sprocket and chainring and check that the dimension H (Fig. 2) does not exceed 10÷15 mm.

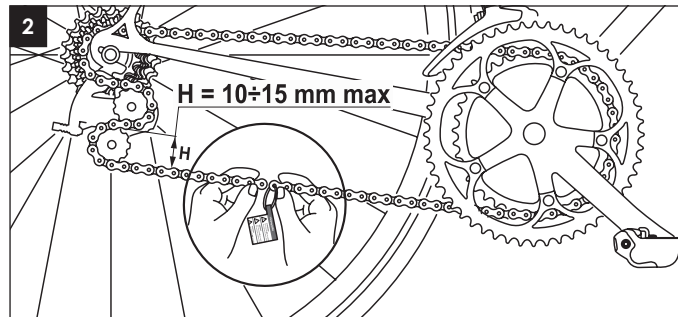
Campagnolo®



- Perform all of the following operations and remove extra links **from the side of the chain opposite the external link, which is identified by the plastic band and the adhesive "WARNING!" label.**

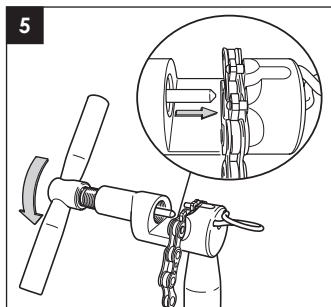
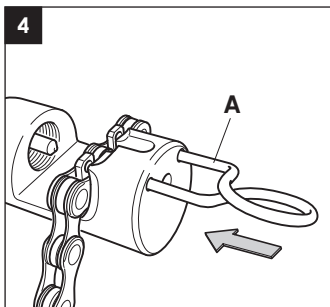
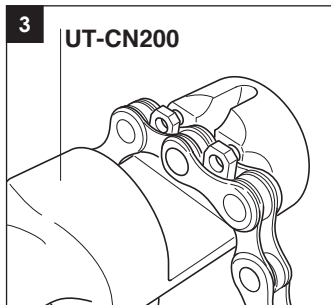
**! WARNING!**

**NEVER** remove or modify in any way whatsoever this external link, which is permanently identified by the stamped production batch number, since it has the calibrated holes need to close the chain. Use of any other connecting link to join the chain may result in unexpected opening of the chain and provoke accidents, personal injury or death.





- To open the chain:
  - fit the link to be opened in tool **UT-CN200** (Fig. 3) taking care **to end with an internal link**
  - clamp the link with the special clamping device (A) (Fig. 4)
  - tighten the tool until the small pin emerges completely from the hole in the link (Fig. 5).

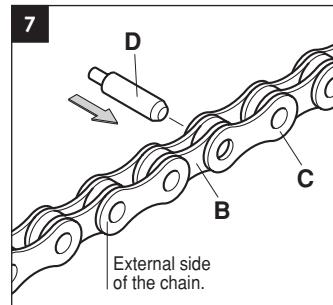
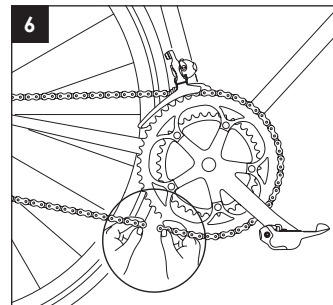


*Campagnolo*

*Campagnolo*



- Remove the plastic band and the adhesive "Warning" label.
- Move the chain on to the larger chainering (keeping it on the smallest sprocket), then position the links to be closed in the area indicated in Figure 6.
- Fit the internal link (B - Fig. 7) into the external link (C - Fig. 7), then fit the small guide pin (D - Fig. 7) in the link hole **from inside the chain towards the outside**.





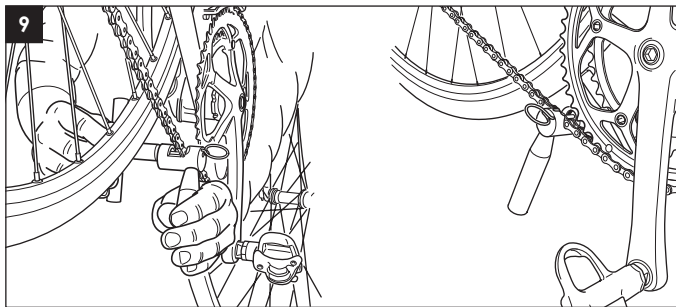
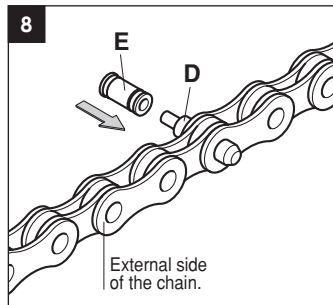
*Campagnolo*

- Centre the small guide pin (D) in relation to the axis of the chain, then fit the small pin (E) into the small guide pin (D), **from inside the chain towards the outside** (Fig. 8).

**Note**

Only one of the two holes in the small pin (E) can be used for coupling with the small guide pin (D).

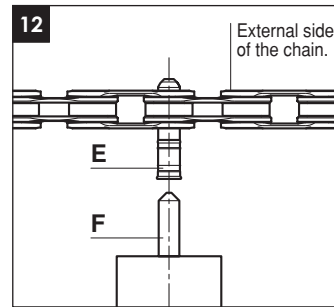
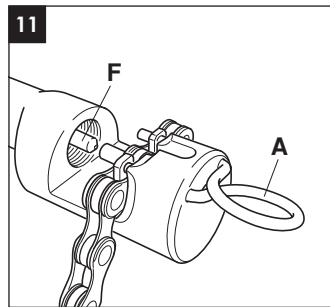
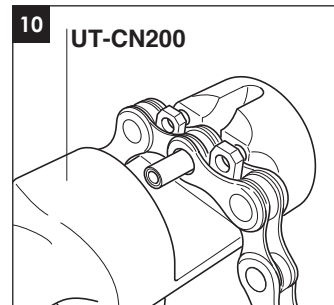
- Position the tool **UT-CN200** as shown in Fig. 9.



*Campagnolo*



- Unscrew tool **UT-CN200**, then fit the link to be closed in the relative seats (Fig. 10).
- Clamp the link with the special clamping device (A) (Fig. 11).
- Make sure that the tapered tip of the pusher (F) (Fig. 11) is in alignment with the center of the small pin (E) (Fig. 12).



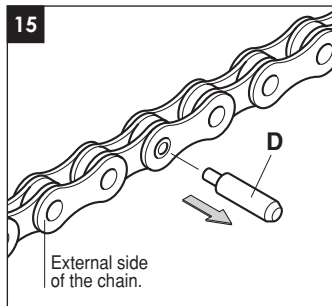
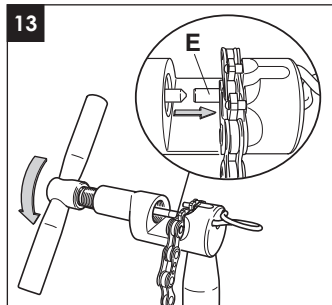
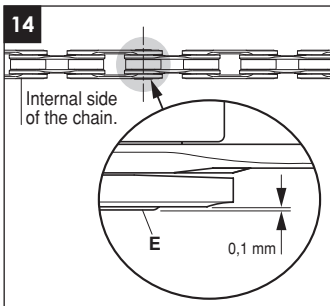


- Apply uniform force to tighten the tool (Fig. 13) until the small pin (E) completely enters the hole in the link.

#### Note

To avoid irreparable damage to the chain, **NEVER TIGHTEN** the tool beyond the locator stop. Allow the small pin (E) to protrude 0.1 mm from the internal side of the chain (Fig. 14).

- Remove the clamping device and remove the chain from the tool.
- Slide the small guide pin (D) out of the link (Fig. 15).



*Campagnolo*

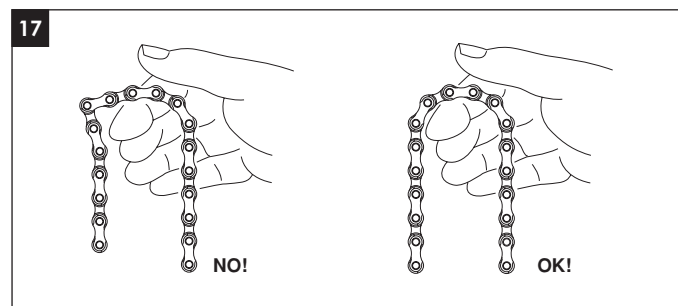
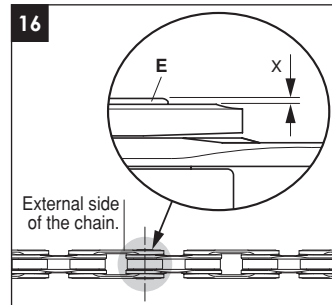
*Campagnolo*



- The slight protrusion (X) (towards the external side of the chain) of the small pin (E) from the link (Fig. 16) is entirely normal and does not obstruct normal chain movement.

**NEVER try to eliminate this protrusion!**

- Make sure that chain closure does not present any "harsh points" or links that do not bend freely (Fig. 17). Free the joints as required with delicate lateral bending of the links.





## 2. CHAIN OPENING

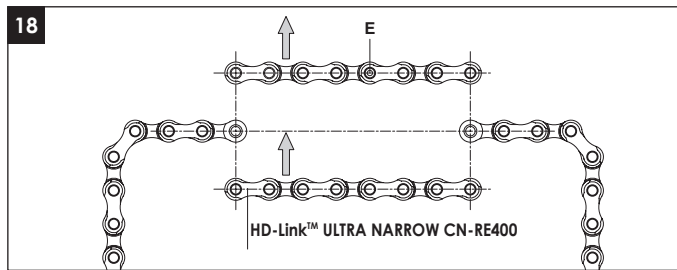
If it proves necessary to open and re-close the chain, you must use the specific closure clip Campagnolo® **HD-Link™ ULTRA NARROW CN-RE400**.

- Obtain the specific closure clip Campagnolo® **HD-Link™ ULTRA NARROW CN-RE400**.
- Identify the small pin (E) (Fig. 18) used to close the chain.
- Shorten the chain by a number of links equivalent to the length of the **HD-Link™** together with the small chain closure pin (E) (Fig. 18).



### WARNING!

**NEVER** re-use the retention pin (E – Fig. 18) as it may not hold the chain closed, resulting in an accident, personal injury or death.



### Note

To shorten the chain, perform all the operations indicated in Section 1 "Chain installation", Figures 3, 4 and 5, by using exclusively Campagnolo® tool **UT-CN200**.

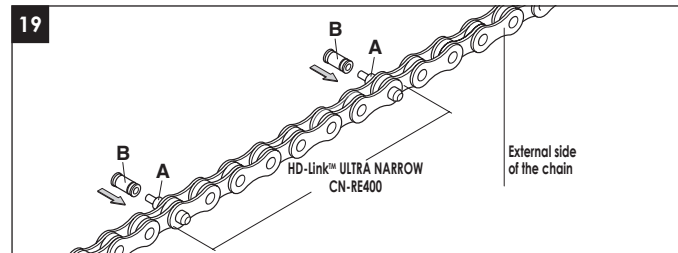
- Close the chain using the specific Campagnolo® **HD-Link™**, two small guide pins (A) positioned as indicated in Figure 19 and two small pins (B).
- Close **only one of the two links** performing the operations indicated in Section 1, Figures 9, 10, 11, 12, 13, 14 and 15.
- Now close the other link.

### Note

The slight protrusion (X) of the small pin (E) from the link (Fig. 16 - page 31) is entirely normal and does not obstruct normal chain movement.

**NEVER try to eliminate this protrusion!**

- Make sure that chain closure does not present any "harsh points" or links that do not bend freely (Fig. 17 - page 31). Free the joints as required with delicate lateral bending of the links.







Campagnolo®

### 3. CHAIN MAINTENANCE

- The life of the chain depends on conditions of use and on the frequency and quality of maintenance. To keep the chain in good condition, cleaning and lubrication must therefore be repeated frequently, especially if it is subjected to heavy-duty use (i.e. after washing your bicycle, after every ride in wet, dusty or muddy conditions etc.).
- Do not remove the chain for cleaning and lubrication.
- Before lubricating, thoroughly clean the drive system (chain, sprocket set, chainrings and derailleur pulleys) with a brush or cloth saturated with an appropriate degreaser or detergent.
- Lubricate the chain.
- After applying the lubricant move the cranks and engage all possible gear combinations in order to thoroughly lubricate the entire drive system.
- Thoroughly clean any residual lubricant from the bicycle and floor.
- At the end of the lubrication operation, **CAREFULLY** degrease rims and brake pads with acetone.

#### WARNING!

- Traces of lubricant on the rims and brake pads can reduce or eliminate the braking capabilities of your bicycle, resulting in an accident, personal injury or death.
- Using poor-quality or incorrect lubricant may damage the chain and cause excessive wear or damage to the system. A damaged drive system can malfunction, resulting in an accident, personal injury or death.



Campagnolo®

#### NOTE

Never spray your bicycle with water under pressure. Pressurized water, even from the nozzle of a small garden hose, can pass seals and enter into your Campagnolo® components, damaging them beyond repair. Wash your bicycle and Campagnolo® components by wiping them down with water and neutral soap.

### 4. CHAIN REPLACEMENT

A chain typically lasts between 2,000 miles and 5,000 miles, depending on the conditions of use and on the frequency and quality of maintenance operations. Use a high precision caliper gauge to measure, in different points of the chain, the length as indicated in fig. 20. If even one of the measurement is longer than 132.60 mm **the chain must immediately be replaced.**

