

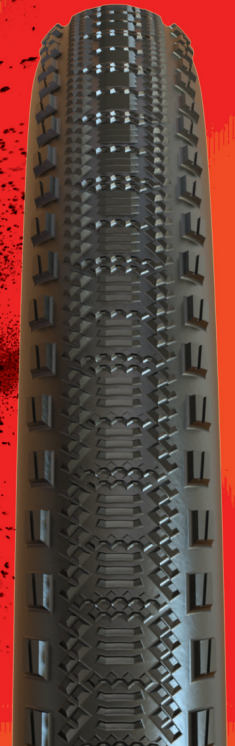


MAXXIS

***INSTANT
WATTAGE***

THE ALL-NEW MAXXIS REAVER

MAXXIS TREAD VICTORIOUSLY





REAYER

Coming to the Maxxis gravel line in September: the all-new, race-ready Reaver. The low-profile tread design uses diamond knurling to reduce rolling resistance and enhance grip in dusty or loose conditions. Paddle knobs arranged in sets of three provide extra bite under hard braking.

The side knobs are spaced closely together and are staggered for consistent cornering performance. A sipe (groove) in each of the side knobs allows them to flex and conform to the terrain, improving traction.

The Reaver is ideal for racers as it is faster, lighter, and even more durable than the venerable Rambler. In mixed conditions or deeper gravel, the Rambler is more versatile,

but if off-road speed is priority number one, choose the Reaver.

At launch, the Reaver is available in a 700x40c size with our lightweight gravel construction, consisting of a 120 TPI tubeless ready casing with EXO sidewall protection. The Reaver comes with either a black or tan sidewall. A 700x45c size will follow shortly.

- Race-ready tread design
- Tubeless-ready 120 TPI casing with EXO sidewall protection
- Dual compound
- Tan wall option available

AVAILABLE
NOW
COMING
SOON
COMING
SOON
COMING
SOON

TREAD	MOLD #	PART #	SIZE	ETRTO	TPI	WEIGHT (g)	COMPOUND	COLOR	TECH
REAYER	M2031RU	ETB00485500	700X40C	40-622	120	430	DUAL	BLACK	EXO/TR
REAYER	M2031RU	ETB00489800	700X40C	40-622	120	430	DUAL	TANWALL	EXO/TR
REAYER	M2031RU	ETB00502500	700X45C	45-622	120	495	DUAL	BLACK	EXO/TR
REAYER	M2031RU	ETB00502600	700X45C	45-622	120	495	DUAL	TANWALL	EXO/TR

MAXXIS GRAVEL FAMILY

ON-ROAD

OFF-ROAD

RECEPTOR

SEMI-SLICK FOR HARD SURFACES



REAYER

DIRT AND GRAVEL RACE TIRE



RAMBLER

ALL-PURPOSE GRAVEL USE



RAVAGER

DEEP OR LOOSE GRAVEL



MAXXIS TREAD VICTORIOUSLY

