

# HUMAN FACTOR

SPANK doesn't cut corners when it comes to designing and manufacturing functional and safe pedals for all disciplines of MTB, and riders of every size and age. Whether designed for kids, pumptrack and dirt jump, or the World's highest level Freeride, SPANK insists on high grade materials and manufacturing processes, and employ FEA analysis, and rigorous laboratory and field testing to ensure every pedal is something we'd ride ourselves in any situation. We also use only steel ball peening to surface finish our pedals, which increases the strength and fatigue life of alloy pedal bodies.

## // PEDAL SPECIFIC 5 AXIS CNC

Whether forged Spike and Oozy Trail Pedals, extruded and sized Spoon pedals, or economic die cast Spoon DC pedals, SPANK uses only industry leading equipment. SPANK invested in a precision, pedal specific 5 axis CNC line, fixtures custom produced in Switzerland, and diamond tipped cutting bits from Germany's leading automotive supplier.

## // FORGED CHROMOLY AXLES

From Spoon 90's for smaller riders, to Spike Flats for heavy hitters, SPANK designs and produces custom pedal axles for all our pedals, from cold forged Chromoly steel, providing the ultimate in strength and safety, and lowest weight.

## // CHAMFERED LEADING EDGES

SPANK's iconic chamfered leading edges on all pedal models were a game changer in pedal design. Forward edges are angled to deflect impacts and glance off obstacles, reducing pedal strike accidents and crashes, and increase pedal clearance in high speed turns.

## // IGUS SMART PLASTIC BUSHINGS

SPANK pedals were the first to utilize custom Smart Plastic pedal bushings from the top producer, IGUS. Today, long lasting, self-lubricating IGUS bushings are more common in high end frames and pedals, due to their superiority to traditional DU bushings. IGUS bushings feature in all SPANK pedals from Spoon DC to Oozy Trail.

is all about dialing in the fit and function of your bike, to get the most out of every moment on the trails.

As a primary contact points between rider and bike, SPANK has applied special care to the fit and function of our pedals to find the perfect fit for every rider. Few people consider proper fit when it came to flats. However, grip, safety, and overall comfort and confidence are greatly increased with the right pedal model selection for each person's specific foot size, and riding style.



## // LOW CENTER OF GRAVITY DESIGN

While pedal thinness is an important factor for pedaling clearance, SPANK pedals also prioritize keeping the rider's foot as close as possible to the pedal axle, where other pedals are often thickest in this zone. This decreases the need to maintain balance over the pedal axle, improving grip and pedaling efficiency, and reducing dangerous pedal flip.

## // LOW Q-FACTOR

Q-Factor is the distance between your feet while riding, which should be kept as low as possible for efficiency, maneuverability and clearance. Where most pedals unnecessarily add to the Q-Factor of your bike, with a wrench interface between the pedal and crank, SPANK pedals mount pedals from the backside of the crank, placing them as close as possible to the cranks, decreasing both the Q-factor, and undue leverage which can reduce ultimate strength.



## // SEALS AND INDUSTRIAL BEARINGS

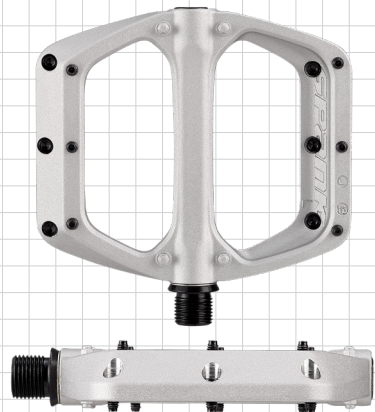
SPANK uses only pedal specific, custom, Industrial Grade bearings in all our pedals. Bearings are protected from moisture and contamination by axle seals on both inboard and outboard ends. Ingenious Friction Seals also help to reduce pedal free-spin, while ensuring the longevity of bearings and pedal function.

# HUMAN FACTOR PEDAL FITTING

## SPIKE + OOZY

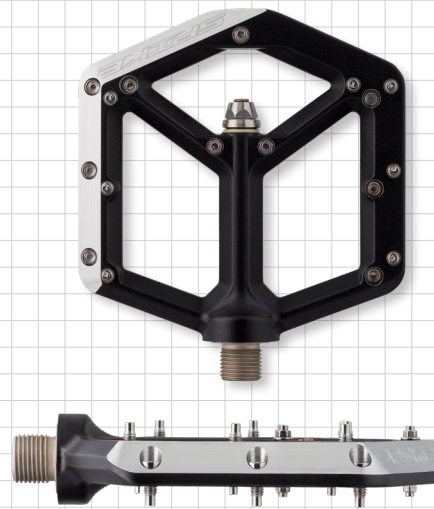
Spike and Oozy Trail Pedals have a large asymmetric polygonal platform, anatomically designed to offer maximum support and traction with the slimmest pedal body possible, at just 12mm thin.

They feature 100 x 100mm of actual contact surface on each side, which is perfect for most adults. These pedals have been designed for high level, aggressive riding, whether DH/FR, or Trail/Enduro, maximizing pedal clearance both when pedaling and cornering.

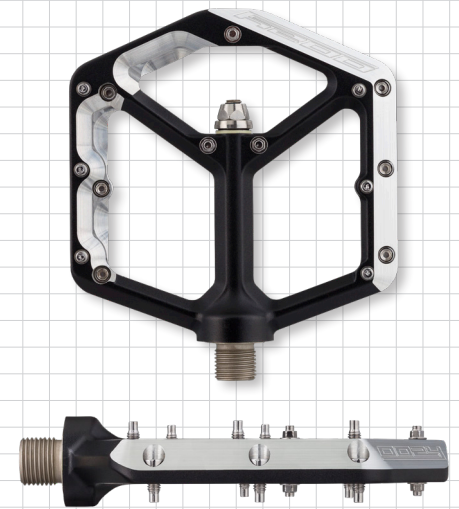


## SPOON DC

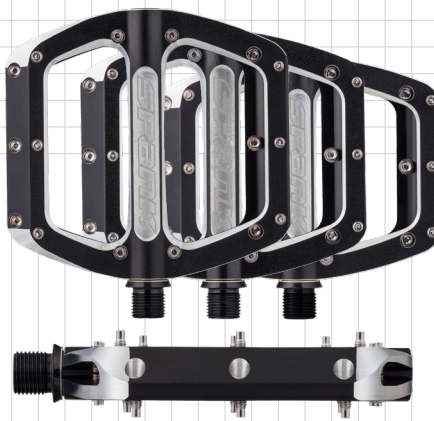
These pedals share the same versatile, medium size, 100x105mm platform as the Spoon 100, however are designed to offer a slightly less locked in feel, improved ease of maneuverability when riding, and less danger from shin strikes due to shorter traction pins. This makes them the ideal solution for disciplines like dirt jump and pumptrack, and for less advanced riders. Traction can be upgraded with a full length pin kit when and if desired.



Spike pedals are recommended for the heaviest hitting riders, who often experience pedal impacts.



Oozy pedals are recommended for those who prefer a good balance between light weight and ultimate strength, but don't impact their pedals quite as often or hard.



## SPOON 90 /100 /110

Spoon 110 Pedals are the largest in the Spank pedal line, with a wide 110x105mm platform. This makes the Spoon 110 perfect for large riders with shoe sizes US 11 and above, or for riders who often wear bulky boots (example snow riders). The 16-12mm concave profile still feels remarkably thin compared to traditional flat pedals, and provides an exceptionally locked in feel.

Spoon 100 Pedals have a medium sized 100x105mm platform, designed for average sized riders, with shoes from US size 7-10. They have a 16-12mm concave profile which delivers a thin ride feel and exceptional levels of traction.

## // EASE OF MAINTENANCE

SPANK pedals are famous with shop mechanics and at-home handymen, for their ease of maintenance. We make convenient and affordable service kits for all our pedals, and most service can be done without the need of special tools or procedures. Give your pedals a quick refresh with an economic bushing/seal replacement kit, or completely rebuild them with new axle/bushing/seal kits. All Spoon pedal models share the same service parts, as do Spike/Oozy pedals.

## // TRACTION PINS

Spike, Oozy, and Spoon Pedals are pre-assembled with steel, full length 9mm, rear-load traction pins at the outer edges, which maximize grip, and allow exposed pins to be replaced if deformed from impacts. The tips of each pin are machined, to prevent thread damage. Spoon DC Pedals use shorter 7mm steel traction pins, making them safer for less experienced riders, and allowing more freedom of foot movement for disciplines such as pumptrack and dirtjump.

Spoon 90 Pedals are the smallest in the Spank line, and an upgrade for most young or smaller riders, with shoe sizes US 6 and under. Despite the narrow 90mm width, Spoon 90's offer exceptional support, and traction, due to a 105mm length. The Spoon 90's are also often favored for those riding in exceptionally tight trail areas, where other pedals tend to get hung up on obstacles to the sides of the trail.

MODEL	PLATFORM SIZE (MM)	PLATFORM PROFILE	SHOE FIT (US)	PIN CONFIGURATION (PER PEDAL)	WEIGHT	RETAIL PRICE	DISCIPLINE
Spike	100x100	12mm (Virtual Concavity)	7-11	20pcs Steel (12 x 9mm / 8 x 4mm)	420g	119.00	AM/DH/FR/E-MTB
Oozy Trail	100x100	12mm (Virtual Concavity)	7-11	18pcs Steel (12 x 9mm / 6 x 4mm)	360g	129.00	TR/AM/EN/E-MTB
Spoon 110	110x105	16-12mm Concave	11 & Up	20pcs Steel (12 x 9mm / 8 x 4mm)	420g	94.90	AM/DH/FR/E-MTB
Spoon 100	100x105	16-12mm Concave	7-10	20pcs Steel (12 x 9mm / 8 x 4mm)	400g	94.90	AM/DH/FR/E-MTB
Spoon 90	90x105	16-12mm Concave	6 & Under	20pcs Steel (12 x 9mm / 8 x 4mm)	360g	94.90	AM/DH/FR/Kids
Spoon DC	100x105	16-12mm Concave	7-10	20pcs (12 x 7mm Steel / 8 x 4mm Alloy)	395g	79.90	AM/DJ/PT/Kids