

Thank you for purchasing the STASH CHAIN TOOL.

Please read these instructions thoroughly before attempting to install this item.

Proper installation is required for safe riding. Contact us or a bike mechanic if you are not sure with certain steps.

### TOOLS REQUIRED

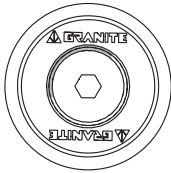
- Hex key 3mm

### CONTENTS

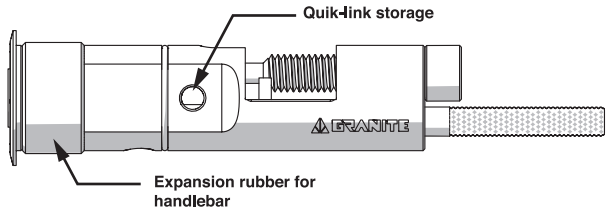
- |                                  |       |       |                                     |       |      |
|----------------------------------|-------|-------|-------------------------------------|-------|------|
| · Chain tool kit                 | ..... | 1 SET | · Expansion rubber for hollow crank | ..... | 1 PC |
| · 1.5mm tyre plugs               | ..... | 2 PCS | · 30mm side cap                     | ..... | 1 PC |
| · 3.5mm tyre plugs               | ..... | 2 PCS | · 22mm side cap                     | ..... | 1 PC |
| · Expansion rubber for handlebar | ..... | 1 PC  |                                     |       |      |

### USAGE TYPES

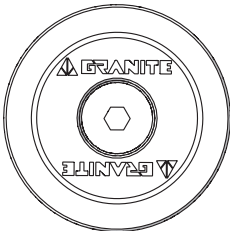
#### CLOSE END LOCK-ON GRIPS



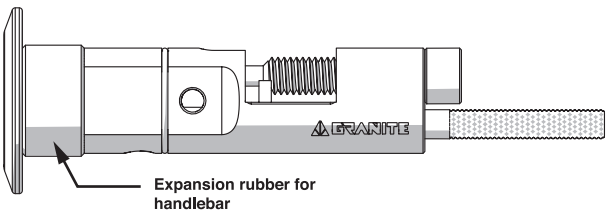
22mm Side cap



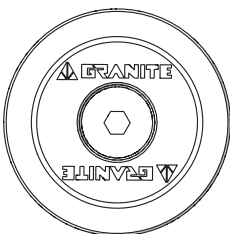
#### OPEN-END GRIPS



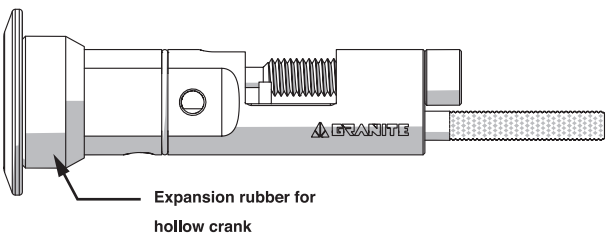
30mm Side cap



#### HOLLOW AXLE CRANK

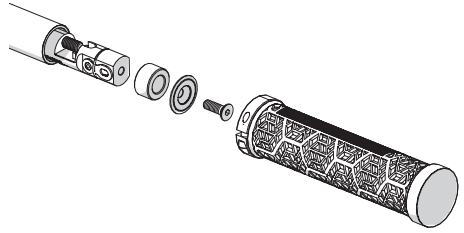


30mm Side cap

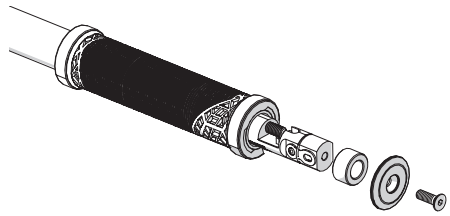


**INSTALLATION**
**CLOSE END LOCK-ON GRIPS**

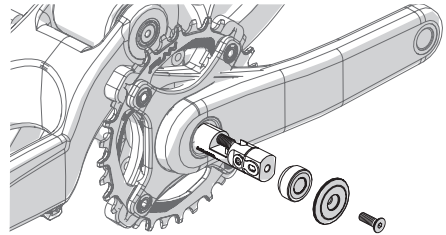
1. Remove your grip.
2. Assemble the small side cap and expansion rubber onto the chain tool with 3mm hex bolt.
3. Plug the chain tool into your handlebar and tighten with 3mm hex key until securely fastened.
4. Install your grip.


**OPEN-END GRIPS**

1. Remove your side cap.
2. Assemble the large side cap and expansion rubber onto the chain tool with 3mm hex bolt.
3. Plug the chain tool into your handlebar and tighten with 3mm hex key until securely fastened.


**HOLLOW AXLE CRANK**

1. Clean inside of the hollow axle.
2. Use a 3mm hex key to assemble the large side cap and crankset expansion rubber onto the chain tool kit.
3. Plug the chain tool kit into the hollow axle and tighten.


**INSTRUCTIONS**

1. Remove the steel pin by turning counter clockwise, and insert pin into the side hole near the bottom of chain tool.
2. Place chain link into the fixture of the chain tool (at the spot you want to disconnect) and hold down the chain link securely so that it bottoms out in the chain tool.
3. Make sure there is a good alignment between the chain rivet and the pressing pin. Drive the pressing pin with 5mm hex key clockwise to push out the chain rivet.
4. When packing up, make sure the steel pin and pressing pin are securely fastened and bottomed out in the threads to prevent rattling or parts coming loose inside your handlebar.

