

Thank you for purchasing the STASH TYRE PLUG.

Please read these instructions thoroughly before attempting to install this item.

Proper installation is required for safe riding. Contact us or a bike mechanic if you are not sure with certain steps.

TOOLS REQUIRED

- Hex key 3mm

CONTENTS

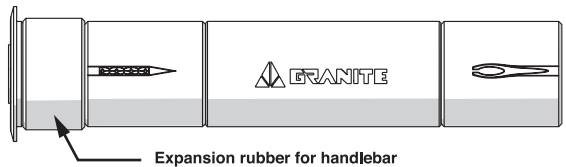
- | | | | | | |
|----------------------------------|-------|-------|-------------------------------------|-------|------|
| · Tyre plug kit | | 1 SET | · Expansion rubber for hollow crank | | 1 PC |
| · 1.5mm tyre plugs | | 2 PCS | · 30mm side cap | | 1 PC |
| · 3.5mm tyre plugs | | 2 PCS | · 22mm side cap | | 1 PC |
| · Expansion rubber for handlebar | | 1 PC | | | |

USAGE TYPES

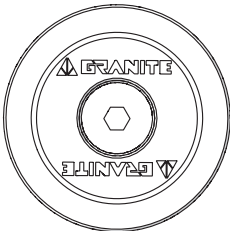
CLOSE END LOCK-ON GRIPS



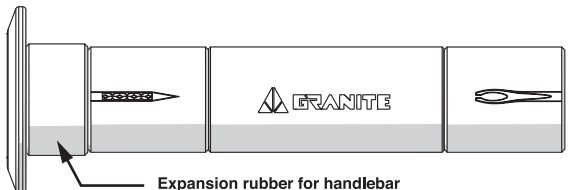
22mm Side cap



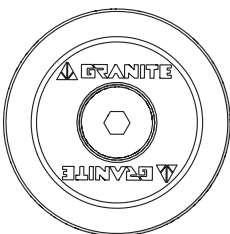
OPEN-END GRIPS



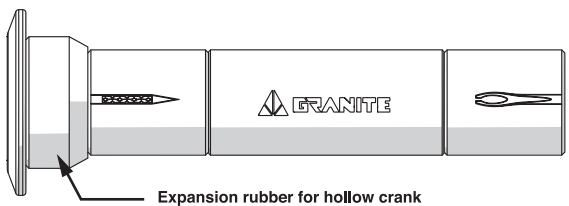
30mm Side cap



HOLLOW AXLE CRANK

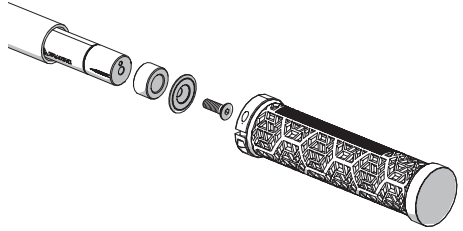


30mm Side cap

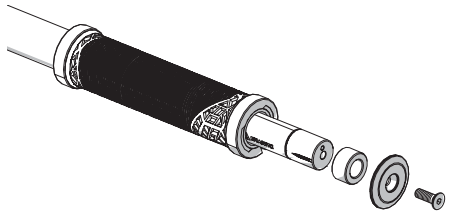


INSTALLATION**CLOSE END LOCK-ON GRIPS**

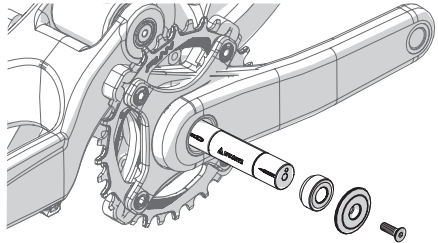
1. Remove your grip.
2. Assemble the small side cap and expansion rubber onto the tyre plug with 3mm hex bolt.
3. Plug the tyre plug into your handlebar and tighten with 3mm hex key until securely fastened.
4. Install your grip.

**OPEN-END GRIPS**

1. Remove your side cap.
2. Assemble the large side cap and expansion rubber onto the tyre plug with 3mm hex bolt.
3. Plug the tyre plug into your handlebar and tighten with 3mm hex key until securely fastened.

**HOLLOW AXLE CRANK**

1. Clean inside of the hollow axle.
2. Use a 3mm hex key to assemble the large side cap and crankset expansion rubber onto the tyre plug kit.
3. Plug the tyre plug kit into the hollow axle and tighten.

**INSTRUCTIONS**

1. Remove the tyre plug kit from your handlebar or crankset.
2. Remove the reamer cap from the canister.
3. Ream the puncture hole several times so that the hole is big enough to insert the tyre plug. Be careful not to pierce your tubeless tape when doing this. When you are done, replace reamer cap back into canister.
3. Remove the tyre fork cap and a tyre plug from canister. Insert a tyre plug into the fork bit as shown in the diagram.
4. Insert tyre plug half way into the puncture hole and gently pull out the fork bit. Make sure the tyre plug remains inside the puncture hole.
5. Replace the tyre fork cap back into the canister.
6. All done! Inflate your tyre and off you go!

