

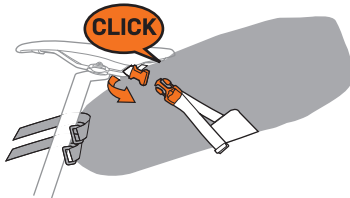
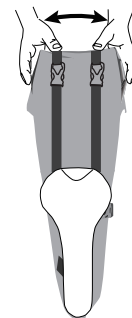


fig. 1

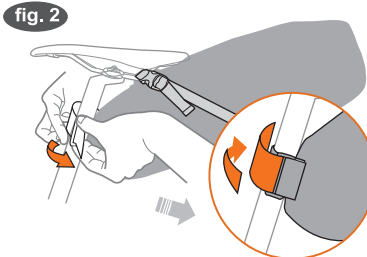


fig. 3

Top view

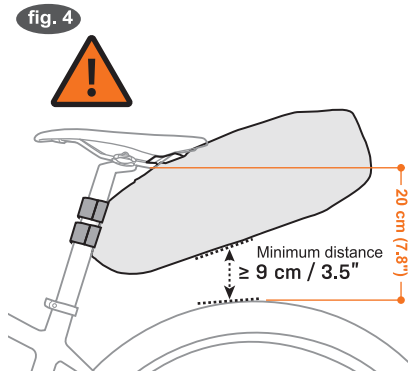


Thread saddle attachment strap through left saddle rail, then fasten buckle. Repeat for right side. Adjust straps so bag fits snugly under the saddle (see fig. 1).

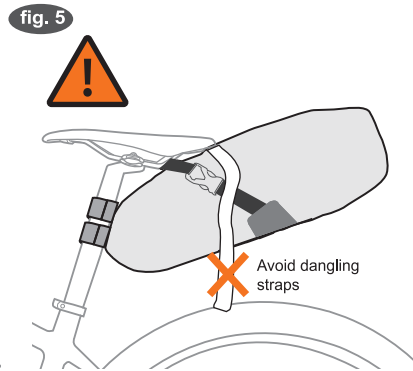


Wrap both Velcro straps around seatpost. Adjust straps so front of bag is tight against seatpost (see fig. 2).

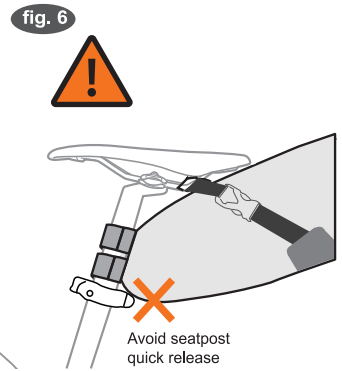
Roll bag opening tightly 3 turns in a clockwise direction, then fasten left and right side buckles. Adjust strap length according to the load carried (see fig. 3). For waterproofness, bag must be rolled up at least three turns.



Minimum distance between bottom of bag and top of tyre is 9 cm (3.5") (see fig. 4).



Before using, ensure there are no dangling straps (see fig. 5).



Ensure bag or straps do not touch or interfere with seatpost quick release lever (see fig. 6).

Carry limit: 5 kg.

**Limited Warranty**

Ibera warrants this product for normal usage against workmanship, and material defects to the original purchaser for two year from purchase date. Products purchased online are not covered by this warranty unless purchased from an authorised Ibera online store. 1. User assumes all risk of personal injury, damage to or failure of the product when it is used in jumping, acrobatics or similar activities. 2. Warranty does not cover any incidental or consequential damages, such as personal injury or other losses due to accident, neglect, misuse, abuse, modification, normal wear and tear, improper care and cleaning, or failure to follow included instructions.

See other Ibera products at [www.ibera.info](http://www.ibera.info)

**Ibera Co. Ltd.**  
Specifications subject to change without notice. Ibera is a trademark of Ibera Co. Ltd. All other trademarks are property of their respective owners. Copyright 2018 Ibera Co. Ltd. Made in Taiwan.  
Artwork: 7-2018.